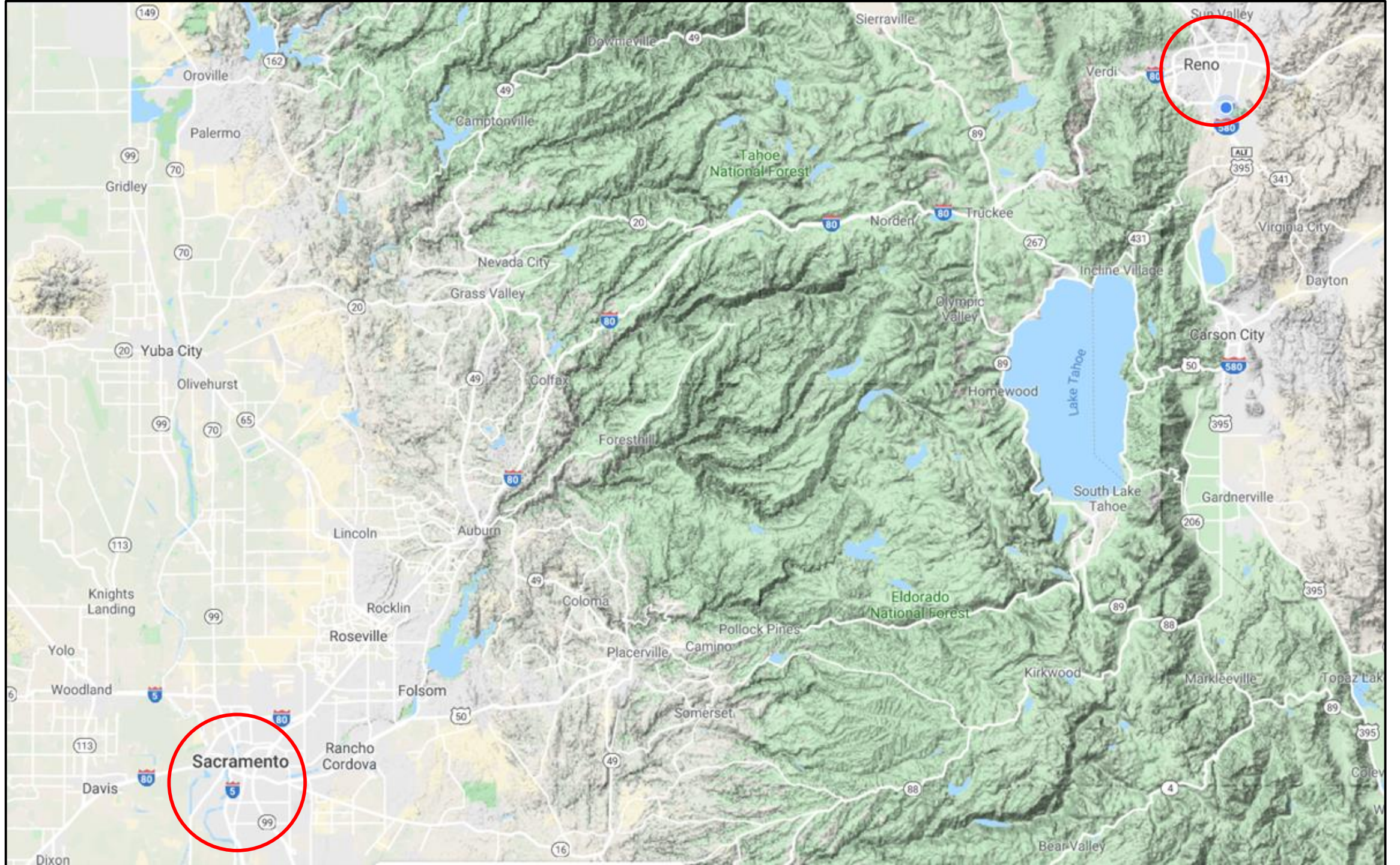


**'Over the Hill'. A stratified approach to the archaeology of  
the Donner Pass Route through the Sierra Nevada.**

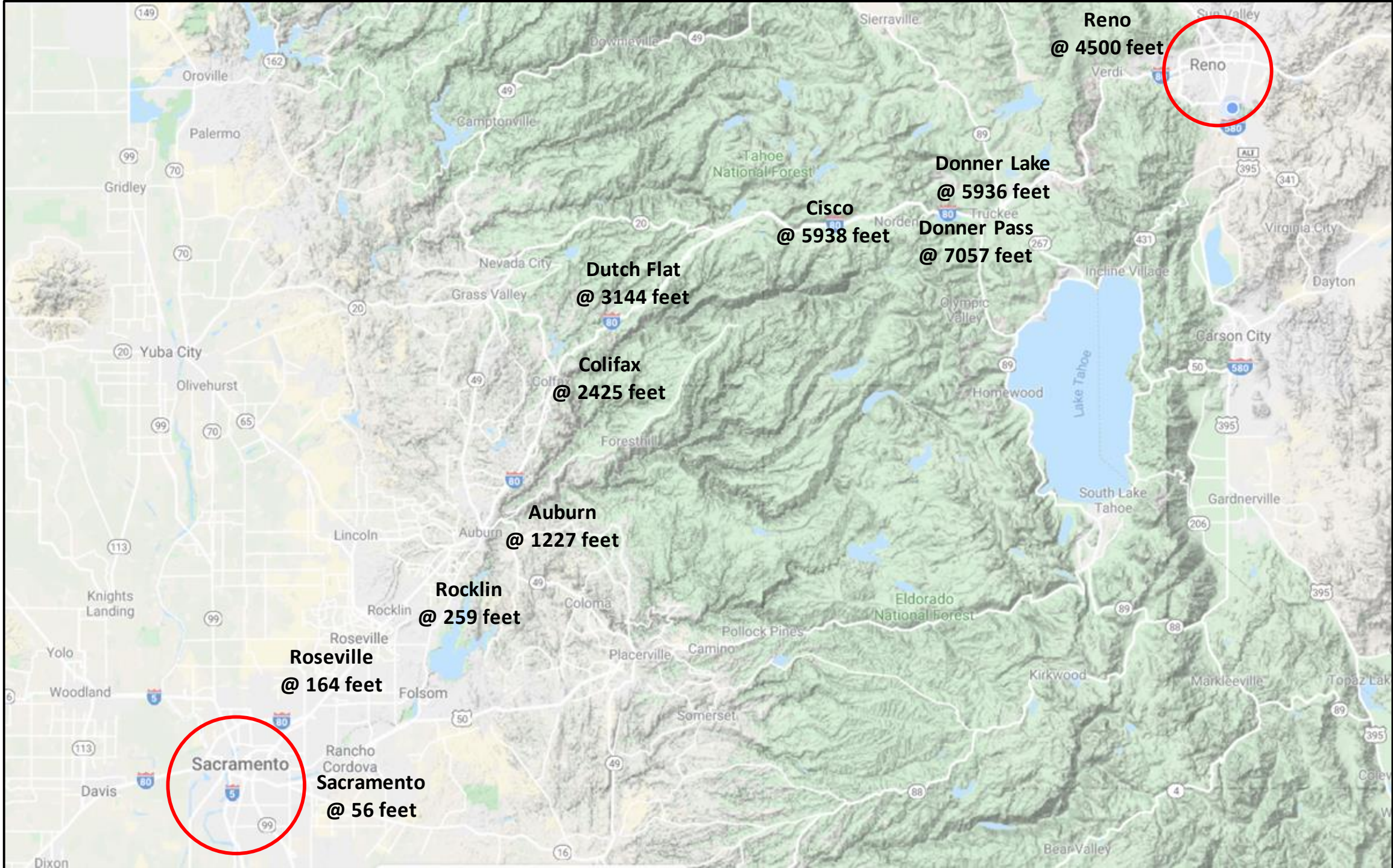
**Stuart Rathbone**





**Sacramento**

**Reno**



**Reno**  
**@ 4500 feet**

**Donner Lake**  
**@ 5936 feet**  
**Donner Pass**  
**@ 7057 feet**

**Cisco**  
**@ 5938 feet**

**Dutch Flat**  
**@ 3144 feet**

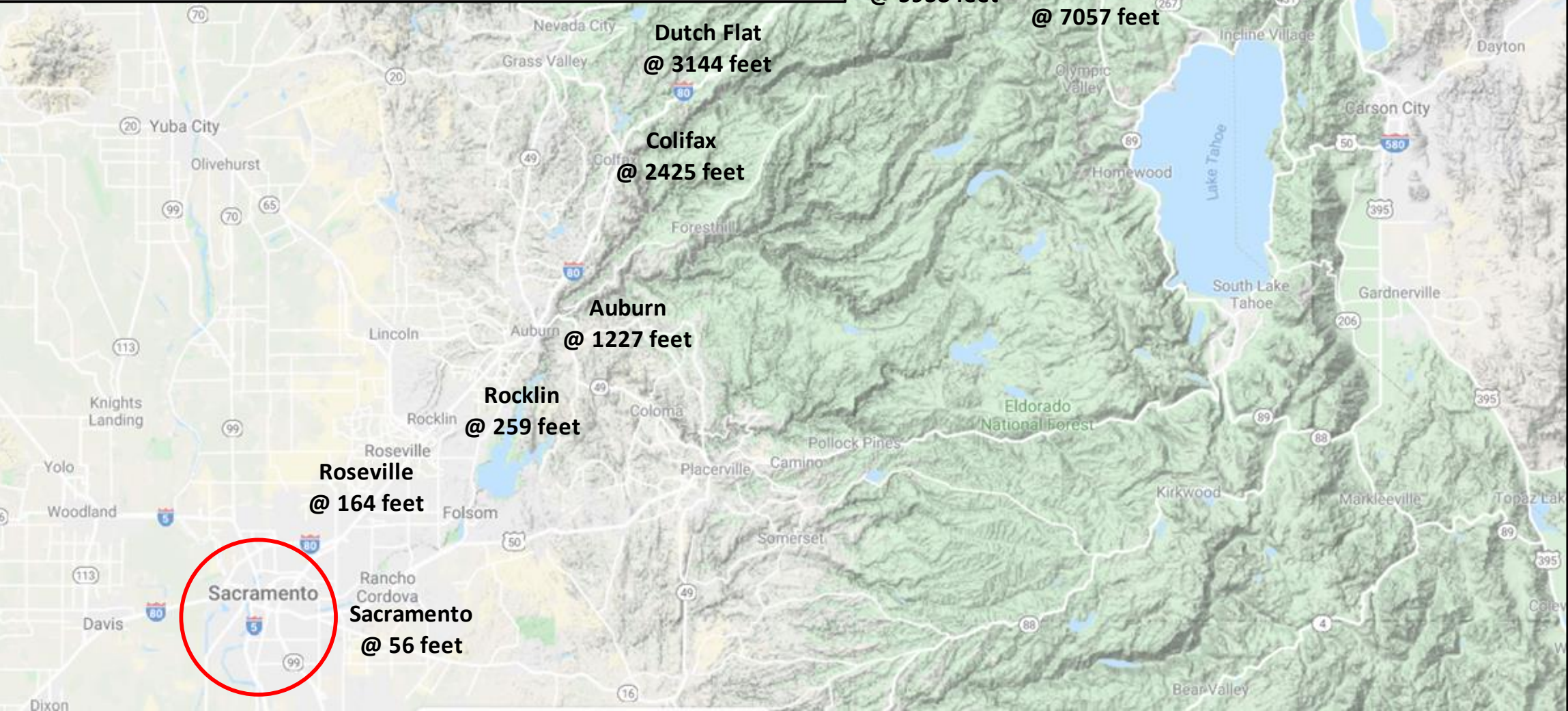
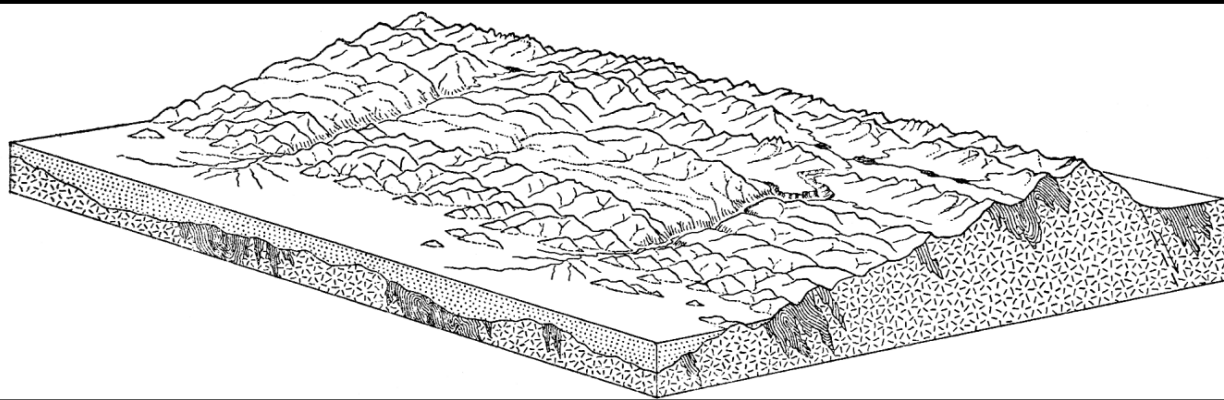
**Colifax**  
**@ 2425 feet**

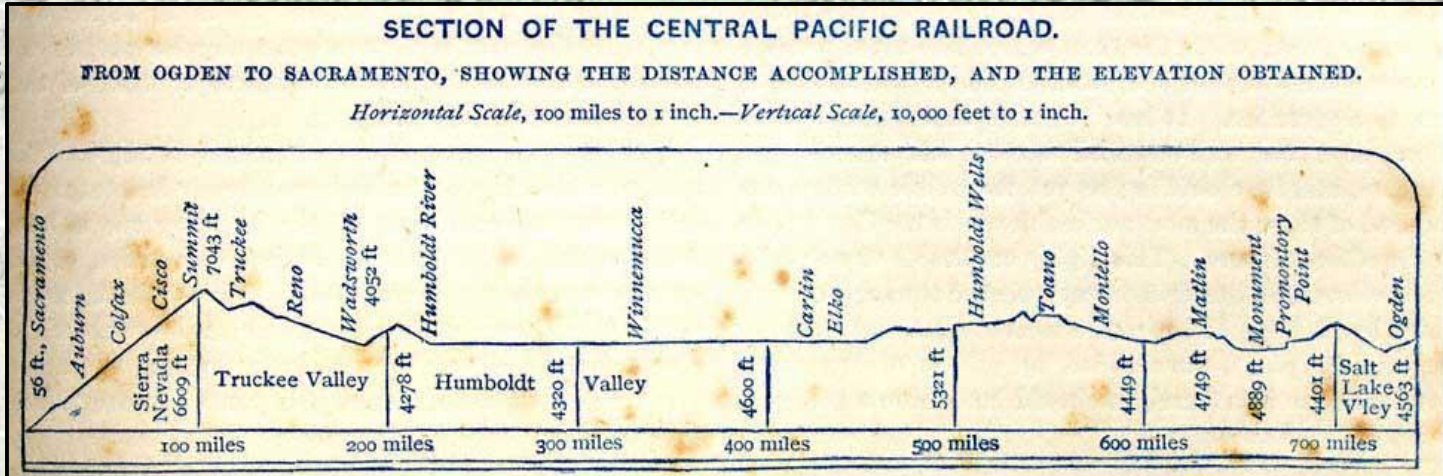
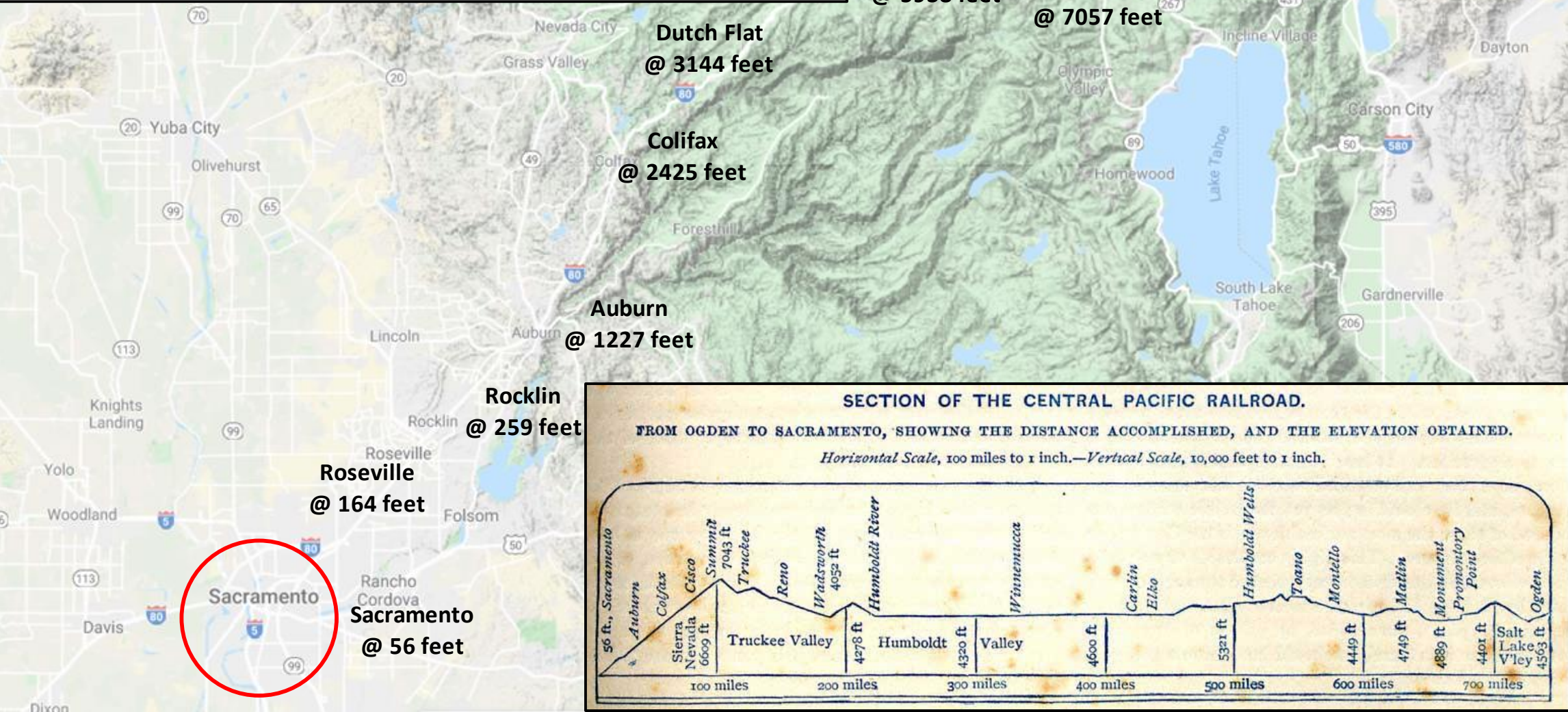
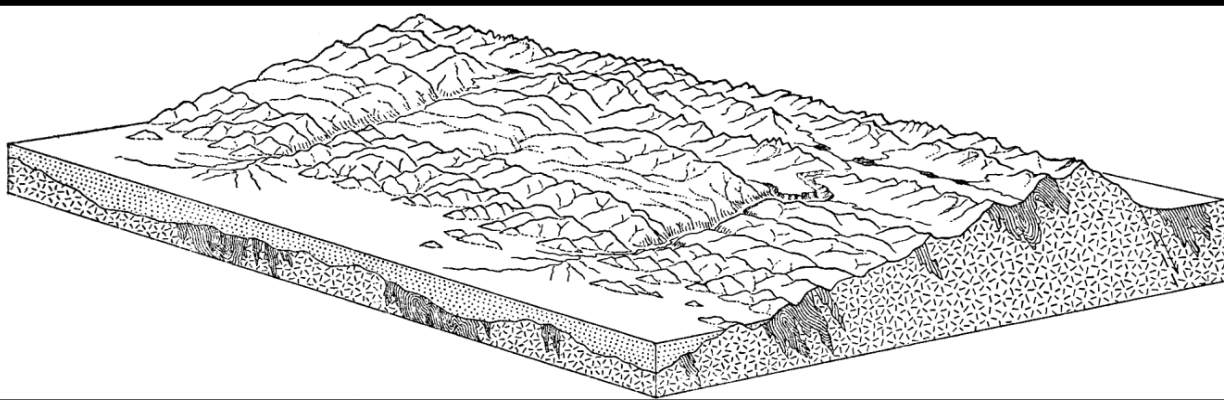
**Auburn**  
**@ 1227 feet**

**Rocklin**  
**@ 259 feet**

**Roseville**  
**@ 164 feet**

**Sacramento**  
**@ 56 feet**







Verdi Peak

Mr Houghton

Donner Memorial State Park

Washoe Lake State Park

Reno

Sparks

Truckee

Washoe City

Polaris

New Washoe City

Soda Springs

Incline Village

Kings Beach

Sand Harbor

Ridgewood

Carson City

Dollar Point

Tahoe City

Olympic Valley

Alpine Meadows

Kingvale

Norden

Eder

Troy

Crystal Bay

Carmelien Bay

431

431

267

89

89

89

28

28

28

ALT 395

50

ALT 395

659

80

663

445

659

580

80

659

80

NEVADA CALIFORNIA

NEVADA CALIFORNIA

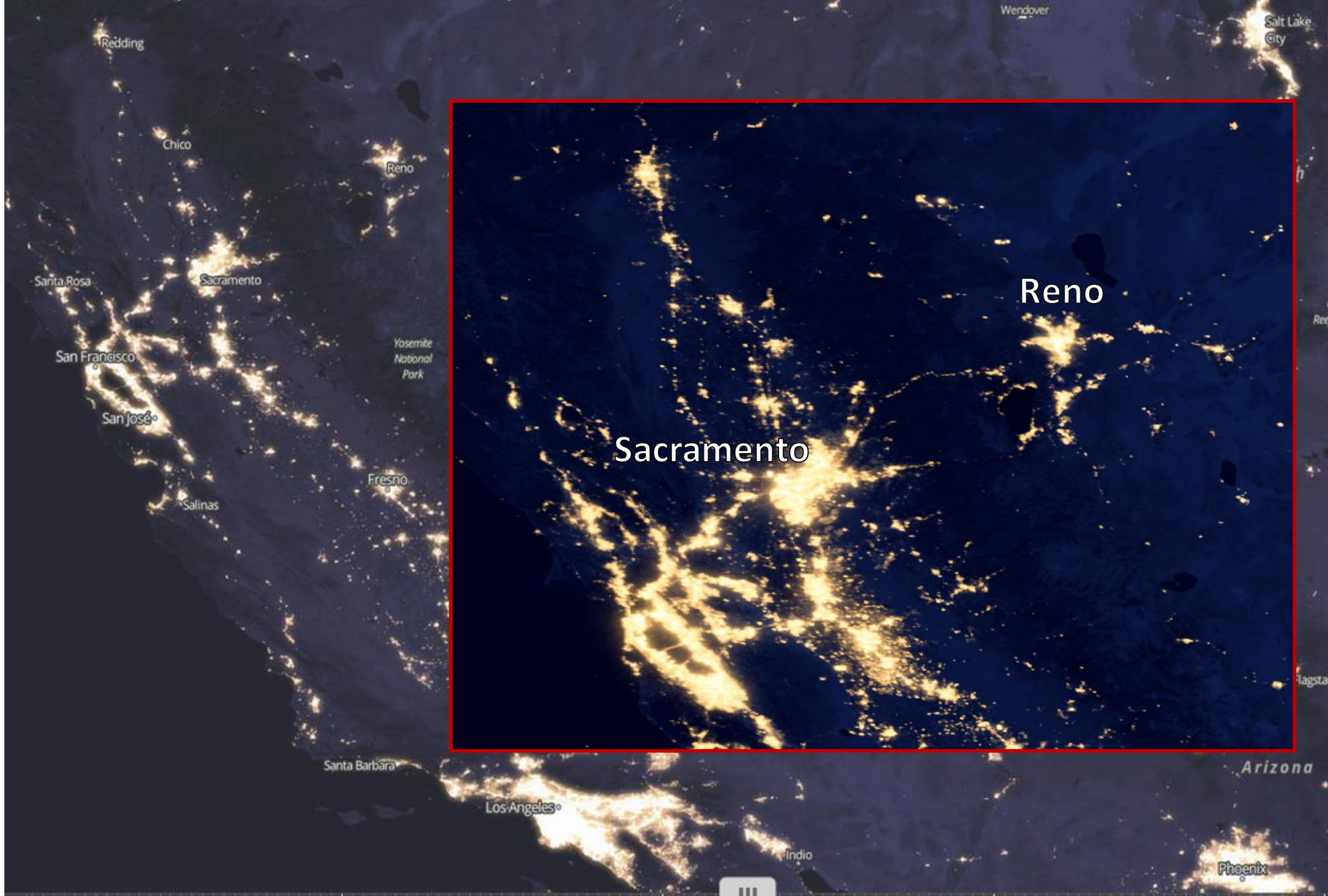
NORTHWEST RENO

Hidden Valley

VC

M





Redding

Chico

Reno

Reno

Sacramento

Santa Rosa

Sacramento

San Francisco

San Jose

Salinas

Fresno

Santa Barbara

Los Angeles

Indio

Phoenix

Arizona

Salt Lake City

Wendover

Ree

lagsta



1844 – 1851 Emigrant Trails

1861 – Dutch Flat – Donner Lake Wagon Road and Hennes Pass Road

1865 – 1877 – Agricultural Ditches for watering the Truckee Meadows

1868 – Central Pacific Railroad

1888 – Truckee Power Station

1900 – Farad Power Station

1901 – Union Pacific Rail Road takeover the Central Pacific Railroad

1904 – Washoe Power Station

1905 – Fleish Power Station

1911 – Sierra Pacific Power Station

1913 – New Lake Tahoe Dam

1913 – Lincoln Highway

1915 – Transcontinental Telephone

1920 – Transcontinental Airway

1922 – Victory Highway

1926 – Double Tracking completed

1926 – US-40

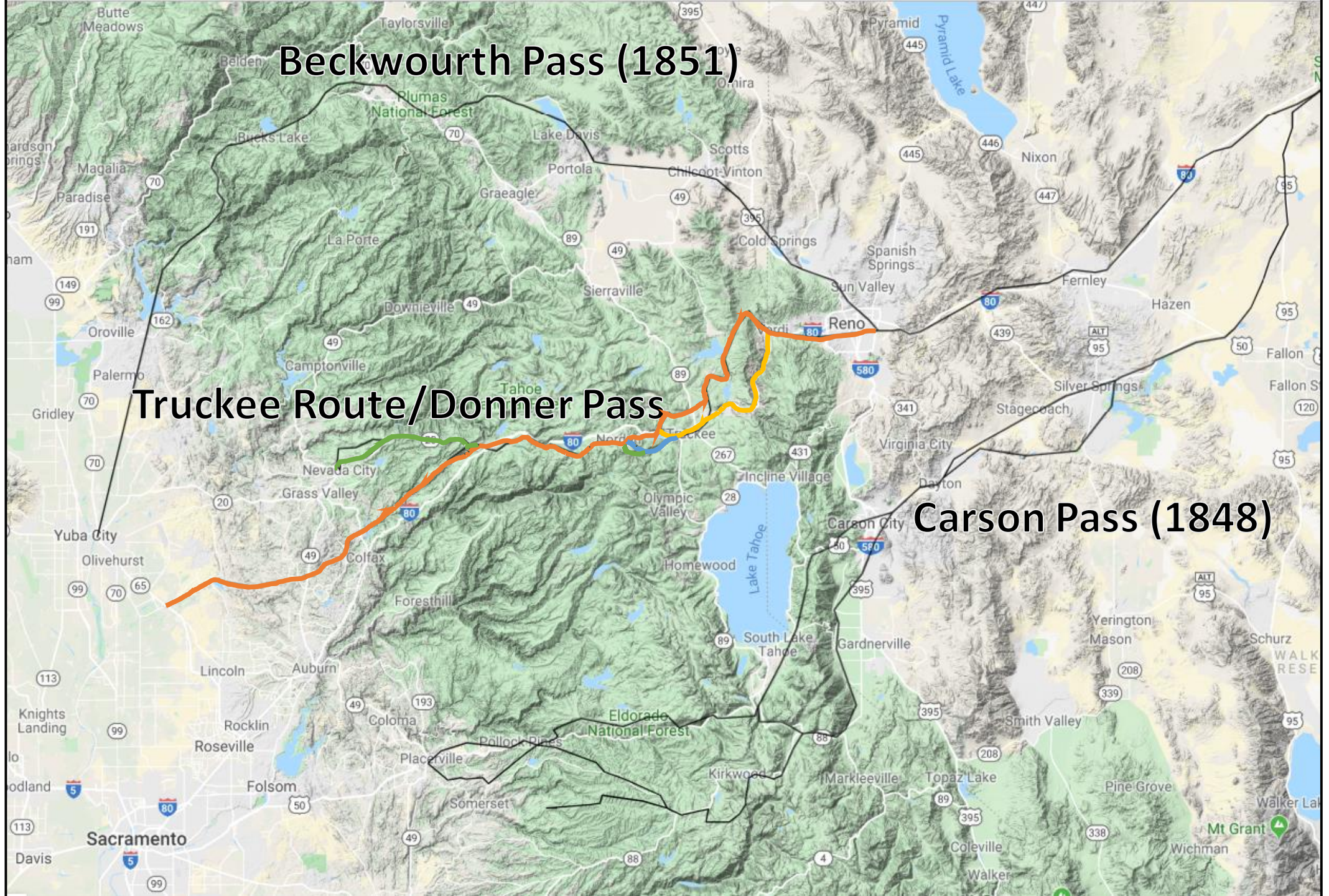
1964 – I-80



**Beckwourth Pass (1851)**

**Truckee Route/Donner Pass**

**Carson Pass (1848)**



1844 – 1851 Emigrant Trails

1861 – Dutch Flat – Donner Lake Wagon Road and Henness Pass Road

1865 – 1877 – Agricultural Ditches for watering the Truckee Meadows

1868 – Central Pacific Railroad

1870 – Lake Tahoe Dam

1888 – Truckee Power Station

1900 – Farad Power Station

1901 – Union Pacific Rail Road takeover the Central Pacific Railroad

1904 – Washoe Power Station

1905 – Fleish Power Station

1911 – Sierra Pacific Power Station

1913 – New Lake Tahoe Dam

1913 – Lincoln Highway

1915 – Transcontinental Telephone

1920 – Transcontinental Airway

1922 – Victory Highway

1926 – Double Tracking completed

1926 – US-40

1964 – I-80



1844 – 1851 Emigrant Trails

1861 – Dutch Flat – Donner Lake Wagon Road and Henness Pass Road

1865 – 1877 – Agricultural Ditches for watering the Truckee Meadows

1868 – Central Pacific Railroad

1870 – Lake Tahoe Dam

1888 – Truckee Power Station

1900 – Farad Power Station

1901 – Union Pacific Rail Road takeover the Central Pacific Railroad

1904 – Washoe Power Station

1905 – Fleish Power Station

1911 – Sierra Pacific Power Station

1913 – New Lake Tahoe Dam

1913 – Lincoln Highway

1915 – Transcontinental Telephone

1920 – Transcontinental Airway

1922 – Victory Highway

1926 – Double Tracking completed

1926 – US-40

1964 – I-80



1844 – 1851 Emigrant Trails

1861 – Dutch Flat – Donner Lake Wagon Road and Henness Pass Road

1865 – 1877 – Agricultural Ditches for watering the Truckee Meadows

1868 – Central Pacific Railroad

1870 – Lake Tahoe Dam

1888 – Truckee Power Station

1900 – Farad Power Station

1901 – Union Pacific Rail Road takeover the Central Pacific Railroad

1904 – Washoe Power Station

1905 – Fleish Power Station

1911 – Sierra Pacific Power Station

1913 – New Lake Tahoe Dam

1913 – Lincoln Highway

1915 – Transcontinental Telephone

1920 – Transcontinental Airway

1922 – Victory Highway

1926 – Double Tracking completed

1926 – US-40

1964 – I-80



1844 – 1851 Emigrant Trails

1861 – Dutch Flat – Donner Lake Wagon Road and Hennes Pass Road

1865 – 1877 – Agricultural Ditches for watering the Truckee Meadows

1868 – Central Pacific Railroad

1870 – Lake Tahoe Dam

1888 – Truckee Power Station

1900 – Farad Power Station

1901 – Union Pacific Rail Road takeover the Central Pacific Railroad

1904 – Washoe Power Station

1905 – Fleish Power Station

1911 – Sierra Pacific Power Station

1913 – New Lake Tahoe Dam

1913 – Lincoln Highway

1915 – Transcontinental Telephone

1920 – Transcontinental Airway

1922 – Victory Highway

1926 – Double Tracking completed

1926 – US-40

1964 – I-80



1844 – 1851 Emigrant Trails

1861 – Dutch Flat – Donner Lake Wagon Road and Henness Pass Road

1865 – 1877 – Agricultural Ditches for watering the Truckee Meadows

1868 – Central Pacific Railroad

1870 – Lake Tahoe Dam

1888 – Truckee Power Station

1900 – Farad Power Station

1901 – Union Pacific Rail Road takeover the Central Pacific Railroad

1904 – Washoe Power Station

1905 – Fleish Power Station

1911 – Sierra Pacific Power Station

1913 – New Lake Tahoe Dam

1913 – Lincoln Highway

1915 – Transcontinental Telephone

1920 – Transcontinental Airway

1922 – Victory Highway

1926 – Double Tracking completed

1926 – US-40

1964 – I-80



1844 – 1851 Emigrant Trails

1861 – Dutch Flat – Donner Lake Wagon Road and Hennes Pass Road

1865 – 1877 – Agricultural Ditches for watering the Truckee Meadows

1868 – Central Pacific Railroad

1870 – Lake Tahoe Dam

1888 – Truckee Power Station

1900 – Farad Power Station

1901 – Union Pacific Rail Road takeover the Central Pacific Railroad

1904 – Washoe Power Station

1905 – Fleish Power Station

1911 – Sierra Pacific Power Station

1913 – New Lake Tahoe Dam

1913 – Lincoln Highway

1915 – Transcontinental Telephone

1920 – Transcontinental Airway

1922 – Victory Highway

1926 – Double Tracking completed

1926 – US-40

1964 – I-80





# Union Pacific Railroad



Oroville

Reno

Truckee

Carson City

Lake Tahoe

South Lake Tahoe

Roseville

Placerville

Sacramento

Image Landsat / Copernicus



1844 – 1851 Emigrant Trails

1861 – Dutch Flat – Donner Lake Wagon Road and Henness Pass Road

1865 – 1877 – Agricultural Ditches for watering the Truckee Meadows

1868 – Central Pacific Railroad

1870 – Lake Tahoe Dam

1888 – Truckee Power Station

1900 – Farad Power Station

1901 – Union Pacific Rail Road takeover the Central Pacific Railroad

1904 – Washoe Power Station

1905 – Fleish Power Station

1911 – Sierra Pacific Power Station

1913 – New Lake Tahoe Dam

1913 – Lincoln Highway

1915 – Transcontinental Telephone

1920 – Transcontinental Airway

1922 – Victory Highway

1926 – Double Tracking completed

1926 – US-40

1964 – I-80



1844 – 1851 Emigrant Trails

1861 – Dutch Flat – Donner Lake Wagon Road and Hennes Pass Road

1865 – 1877 – Agricultural Ditches for watering the Truckee Meadows

1868 – Central Pacific Railroad

1870 – Lake Tahoe Dam

1888 – Truckee Power Station

1900 – Farad Power Station

1901 – Union Pacific Rail Road takeover the Central Pacific Railroad

1904 – Washoe Power Station

1905 – Fleish Power Station

1911 – Sierra Pacific Power Station

1913 – New Lake Tahoe Dam

1913 – Lincoln Highway

1915 – Transcontinental Telephone

1920 – Transcontinental Airway

1922 – Victory Highway

1926 – Double Tracking completed

1926 – US-40

1964 – I-80



1844 – 1851 Emigrant Trails

1861 – Dutch Flat – Donner Lake Wagon Road and Henness Pass Road

1865 – 1877 – Agricultural Ditches for watering the Truckee Meadows

1868 – Central Pacific Railroad

1870 – Lake Tahoe Dam

1888 – Truckee Power Station

1900 – Farad Power Station

1901 – Union Pacific Rail Road takeover the Central Pacific Railroad

1904 – Washoe Power Station

1905 – Fleish Power Station

1911 – Sierra Pacific Power Station

1913 – New Lake Tahoe Dam

1913 – Lincoln Highway

1915 – Transcontinental Telephone

1920 – Transcontinental Airway

1922 – Victory Highway

1926 – Double Tracking completed

1926 – US-40

1964 – I-80



1844 – 1851 Emigrant Trails

1861 – Dutch Flat – Donner Lake Wagon Road and Henness Pass Road

1865 – 1877 – Agricultural Ditches for watering the Truckee Meadows

1868 – Central Pacific Railroad

1870 – Lake Tahoe Dam

1888 – Truckee Power Station

1900 – Farad Power Station

1901 – Union Pacific Rail Road takeover the Central Pacific Railroad

1904 – Washoe Power Station

1905 – Fleish Power Station

1911 – Sierra Pacific Power Station

1913 – New Lake Tahoe Dam

1913 – Lincoln Highway

1915 – Transcontinental Telephone

1920 – Transcontinental Airway

1922 – Victory Highway

1926 – Double Tracking completed

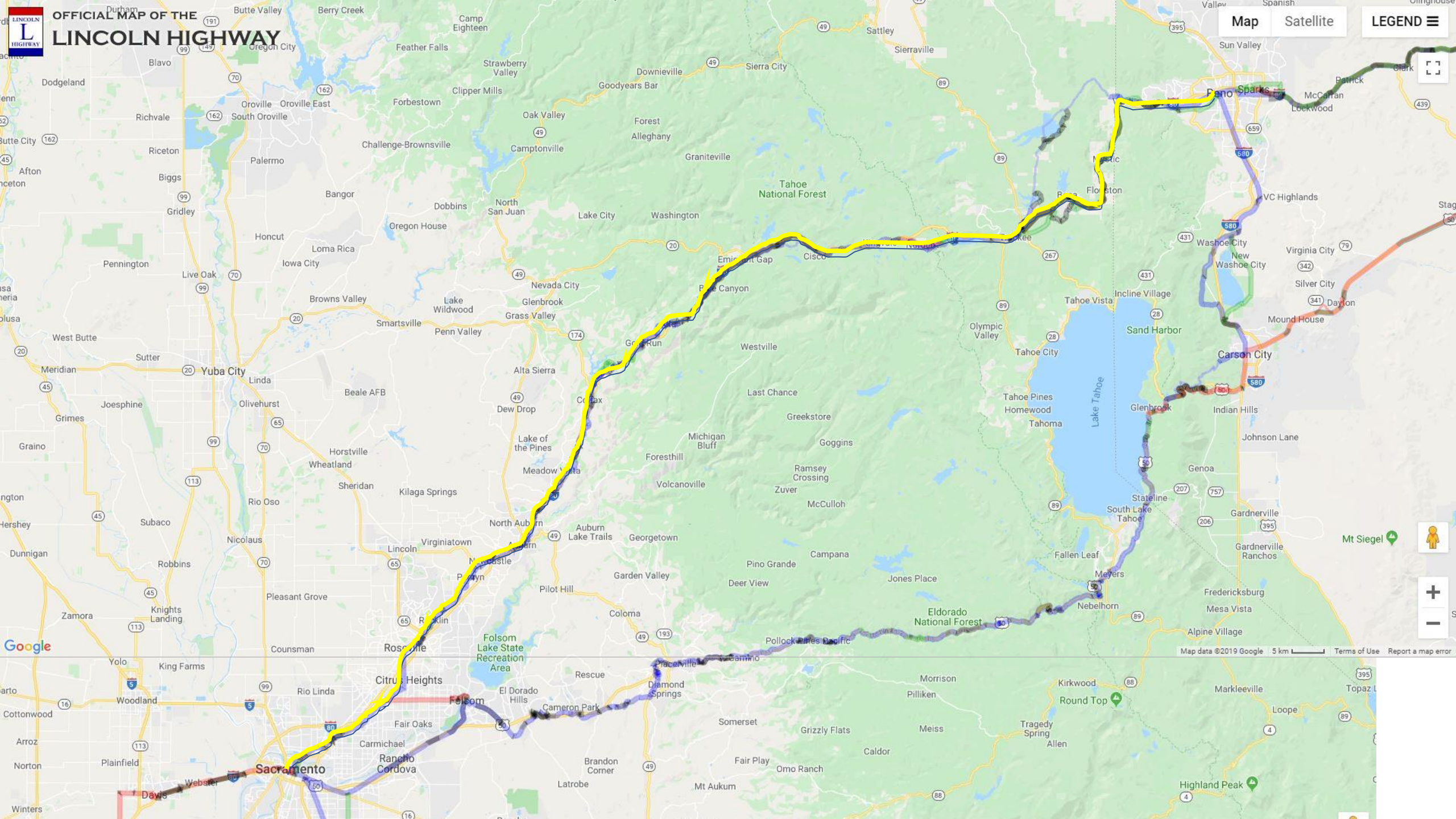
1926 – US-40

1964 – I-80





# OFFICIAL MAP OF THE LINCOLN HIGHWAY



Google

1844 – 1851 Emigrant Trails

1861 – Dutch Flat – Donner Lake Wagon Road and Henness Pass Road

1865 – 1877 – Agricultural Ditches for watering the Truckee Meadows

1868 – Central Pacific Railroad

1870 – Lake Tahoe Dam

1888 – Truckee Power Station

1900 – Farad Power Station

1901 – Union Pacific Rail Road takeover the Central Pacific Railroad

1904 – Washoe Power Station

1905 – Fleish Power Station

1911 – Sierra Pacific Power Station

1913 – New Lake Tahoe Dam

1913 – Lincoln Highway

1915 – Transcontinental Telephone

1920 – Transcontinental Airway

1922 – Victory Highway

1926 – Double Tracking completed

1926 – US-40

1964 – I-80





1844 – 1851 Emigrant Trails

1861 – Dutch Flat – Donner Lake Wagon Road and Henness Pass Road

1865 – 1877 – Agricultural Ditches for watering the Truckee Meadows

1868 – Central Pacific Railroad

1870 – Lake Tahoe Dam

1888 – Truckee Power Station

1900 – Farad Power Station

1901 – Union Pacific Rail Road takeover the Central Pacific Railroad

1904 – Washoe Power Station

1905 – Fleish Power Station

1911 – Sierra Pacific Power Station

1913 – New Lake Tahoe Dam

1913 – Lincoln Highway

1915 – Transcontinental Telephone

1920 – Transcontinental Airway

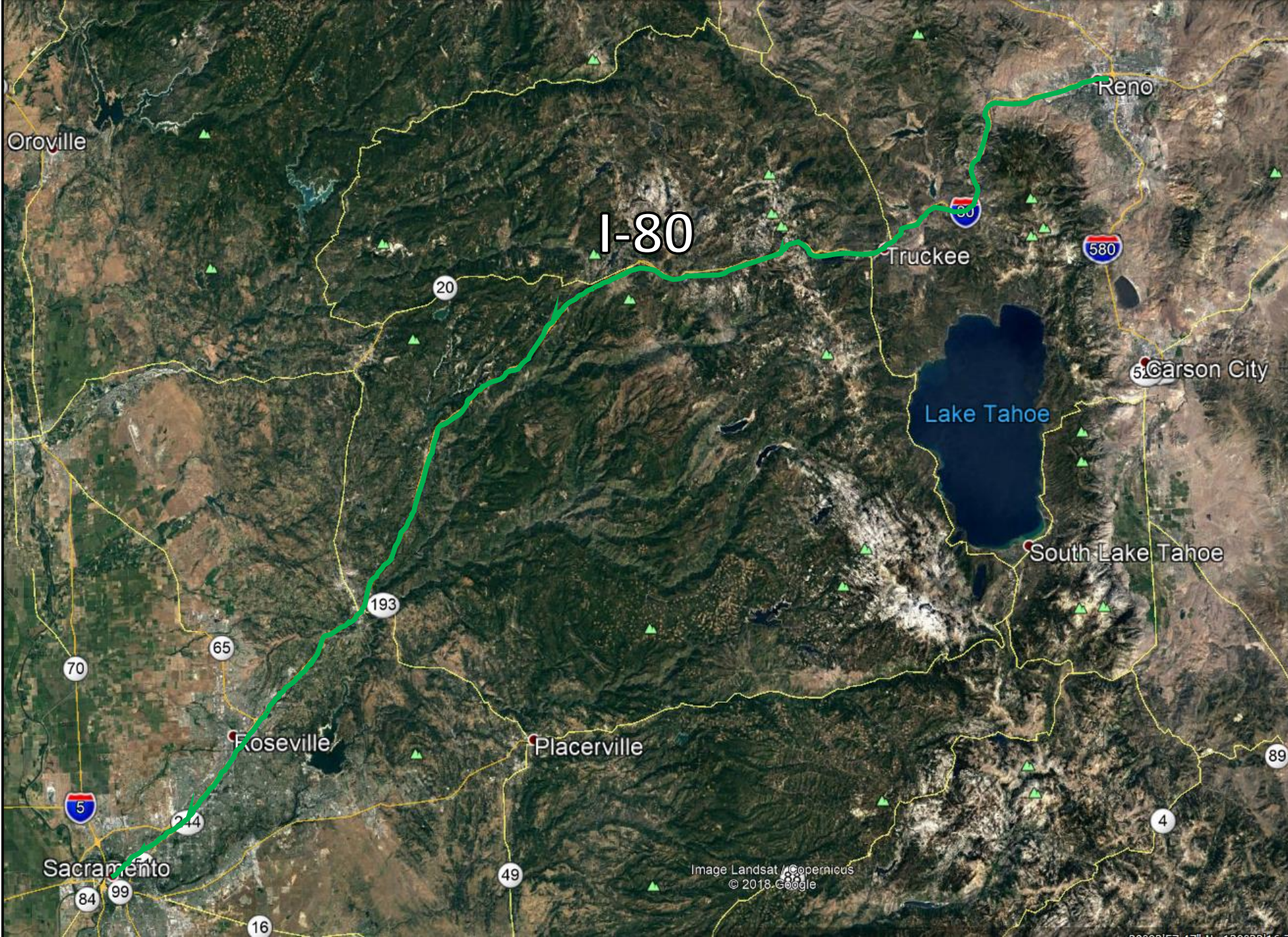
1922 – Victory Highway

1926 – Double Tracking completed

1926 – US-40

1964 – I-80





I-80

Oroville

Reno

Truckee

Carson City

Lake Tahoe

South Lake Tahoe

Roseville

Placerville

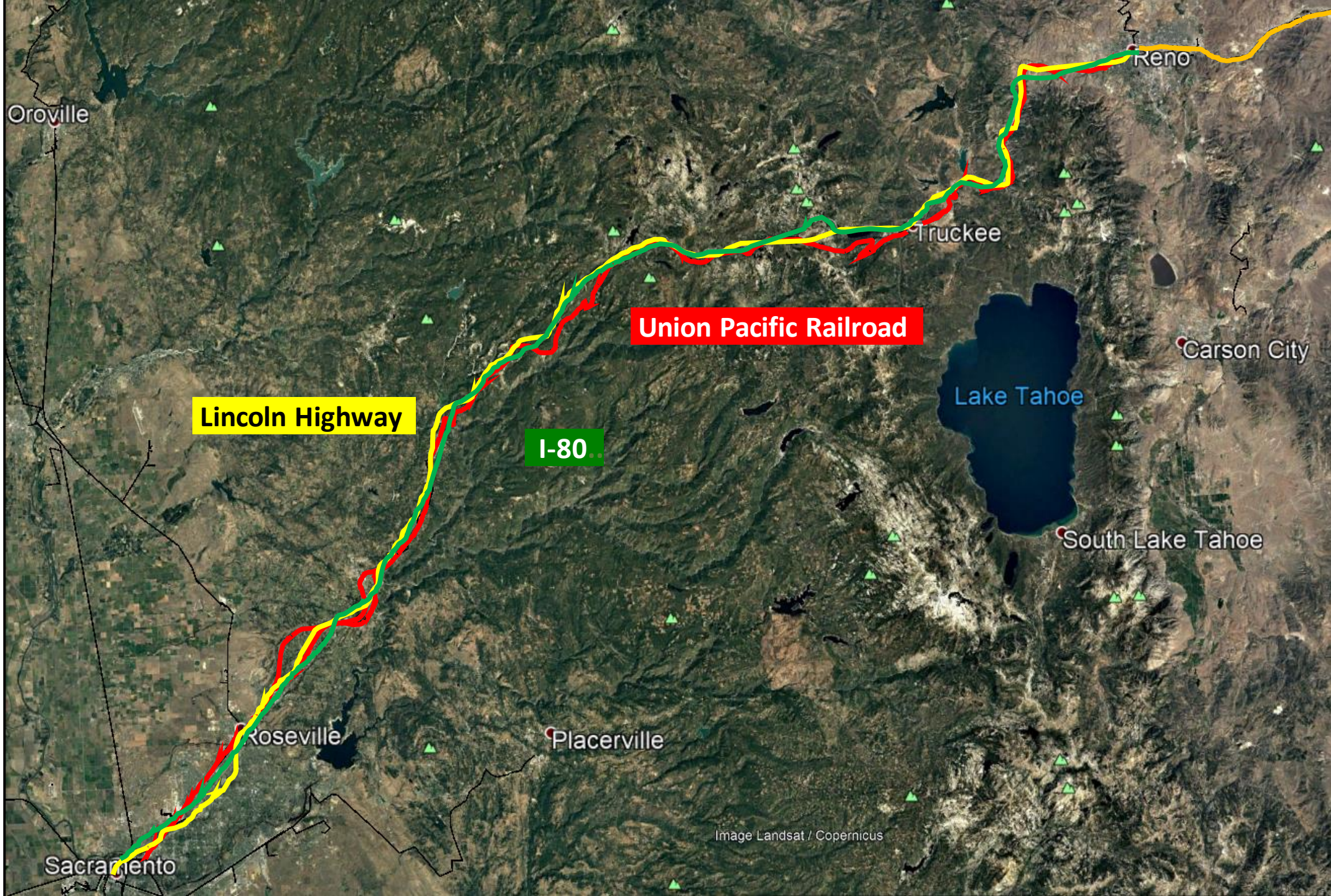
Sacramento

Image Landsat / Copernicus  
© 2018 Google









Oroville

Reno

Truckee

**Union Pacific Railroad**

**Lincoln Highway**

**I-80**

Lake Tahoe

Carson City

South Lake Tahoe

Roseville

Placerville

Sacramento

Image Landsat / Copernicus

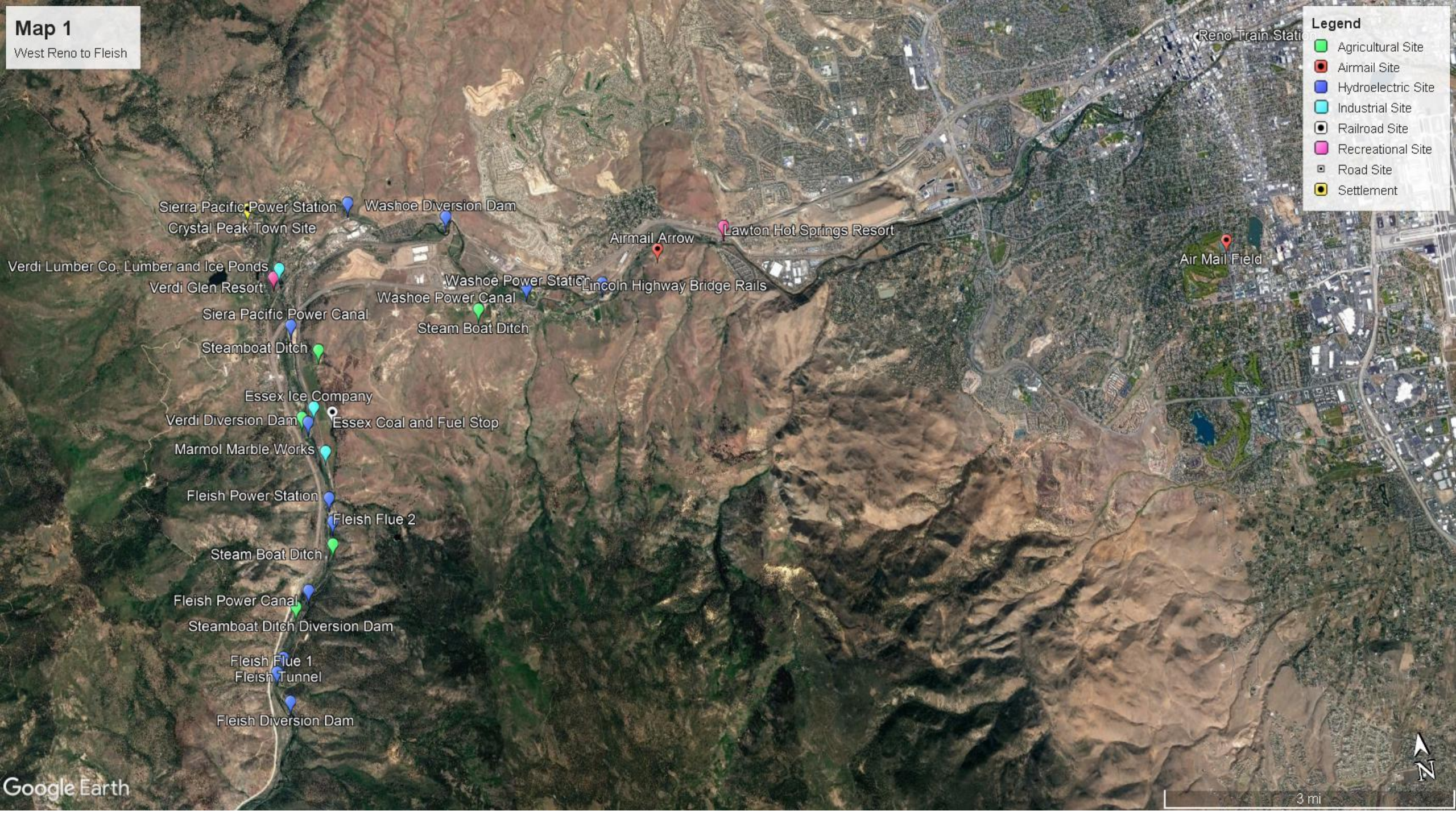
30 Historic  
Bridges on  
Truckee  
River  
between  
Lake  
Tahoe and  
Reno





**Old Steel Bridge  
42.05**





**Map 1**  
West Reno to Fleish

- Legend**
- Agricultural Site
  - Airmail Site
  - Hydroelectric Site
  - Industrial Site
  - Railroad Site
  - Recreational Site
  - Road Site
  - Settlement

Sierra Pacific Power Station  
Crystal Peak Town Site

Washoe Diversion Dam

Airmail Arrow  
Lawton Hot Springs Resort

Reno Train Station

Air Mail Field

Verdi Lumber Co. Lumber and Ice Ponds

Verdi Glen Resort

Washoe Power Station

Lincoln Highway Bridge Rails

Washoe Power Canal

Steam Boat Ditch

Siera Pacific Power Canal

Steamboat Ditch

Essex Ice Company

Verdi Diversion Dam

Essex Coal and Fuel Stop

Marmol Marble Works

Fleish Power Station

Fleish Flue 2

Steam Boat Ditch

Fleish Power Canal

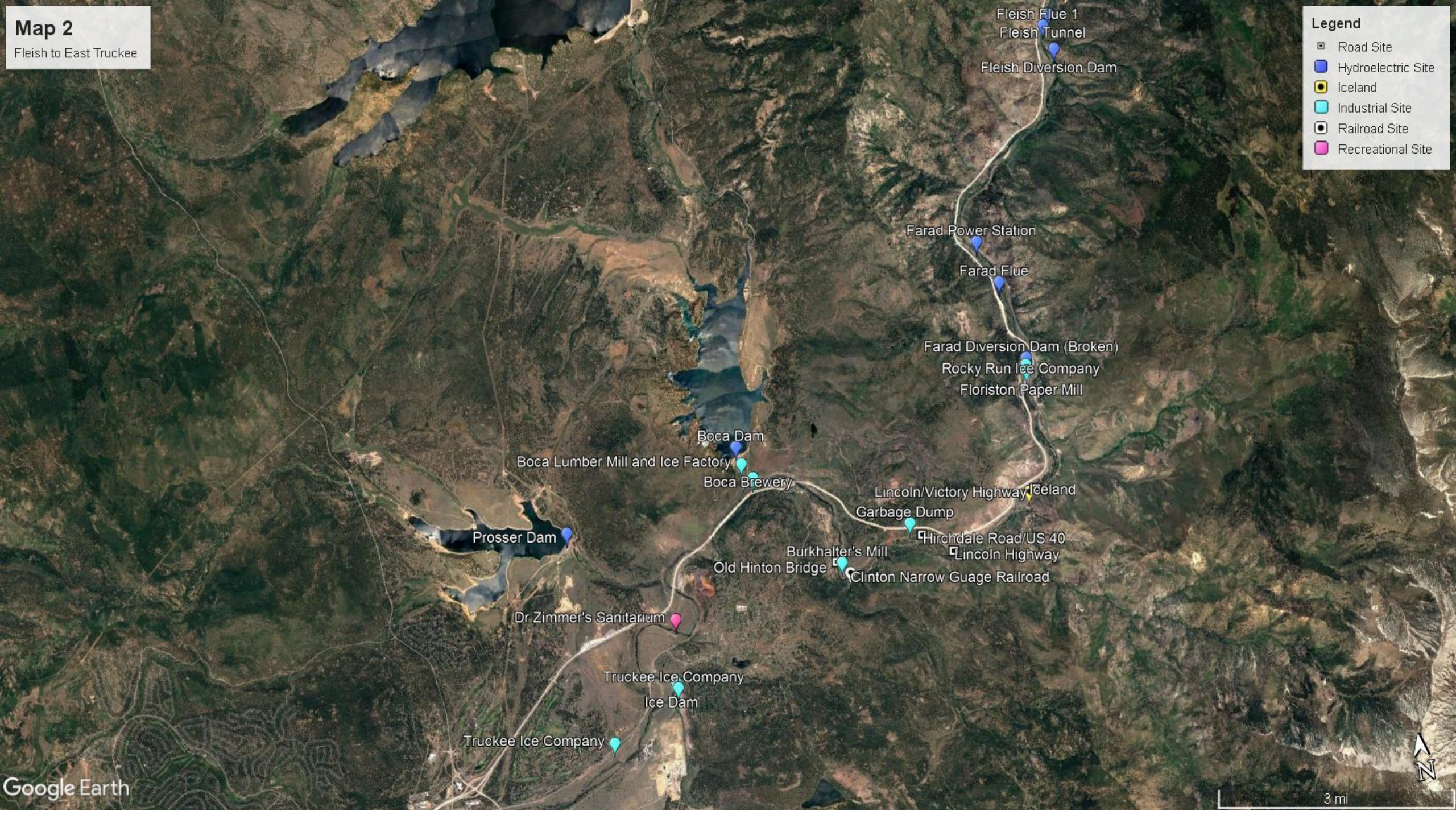
Steamboat Ditch Diversion Dam

Fleish Flue 1

Fleish Tunnel

Fleish Diversion Dam





**Map 2**  
Fleish to East Truckee

**Legend**

- Road Site
- Hydroelectric Site
- Iceland
- Industrial Site
- Railroad Site
- Recreational Site

Fleish Flue 1  
Fleish Tunnel  
Fleish Diversion Dam

Farad Power Station  
Farad Flue

Farad Diversion Dam (Broken)  
Rocky Run Ice Company  
Floriston Paper Mill

Boca Dam  
Boca Lumber Mill and Ice Factory  
Boca Brewery

Prosser Dam

Lincoln/Victory Highway  
Iceland  
Garbage Dump  
Hirschdale Road/US 40  
Lincoln Highway  
Clinton Narrow Gauge Railroad

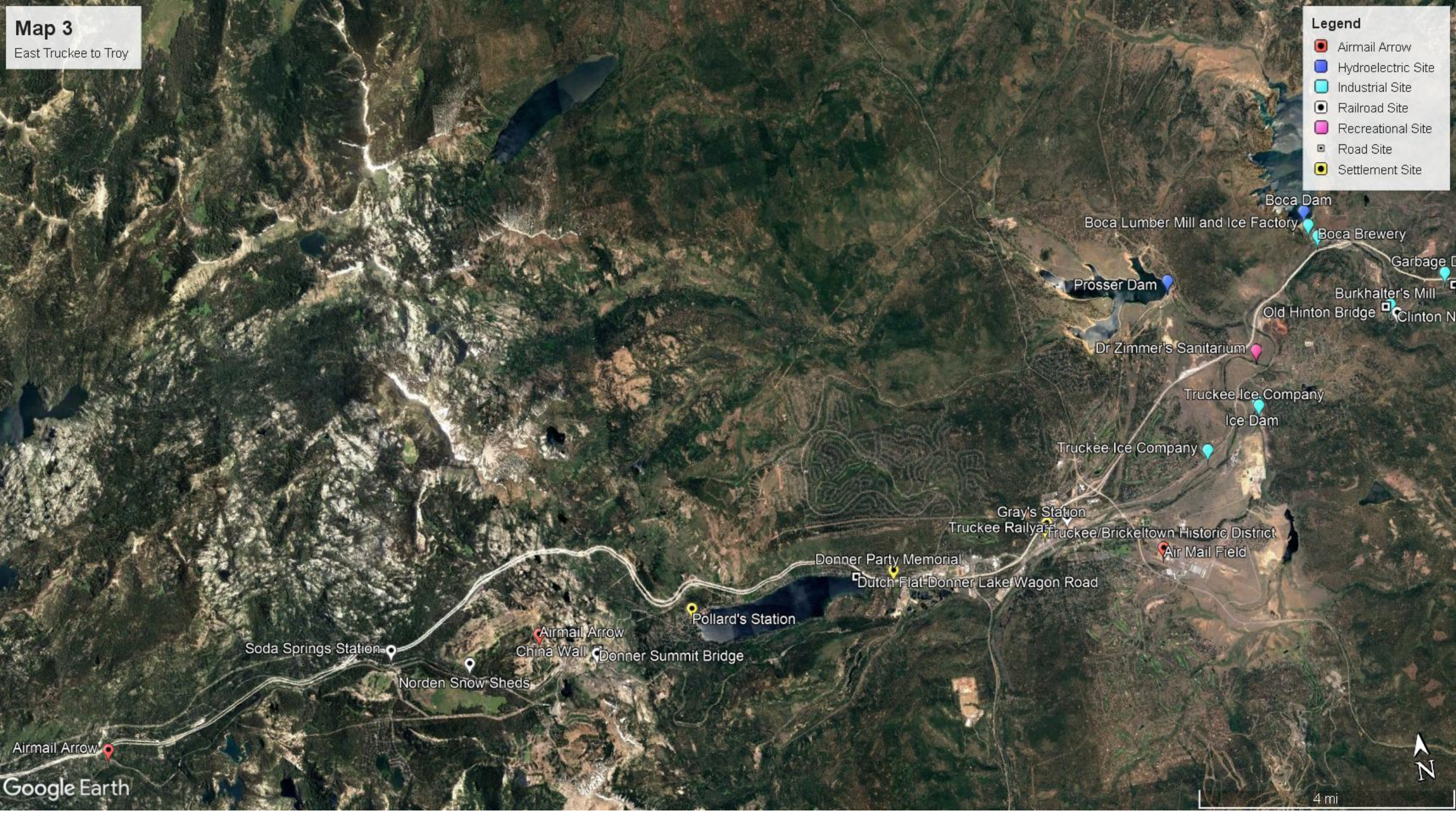
Old Hinton Bridge  
Burkhalter's Mill

Dr Zimmer's Sanitarium

Truckee Ice Company  
Ice Dam

Truckee Ice Company

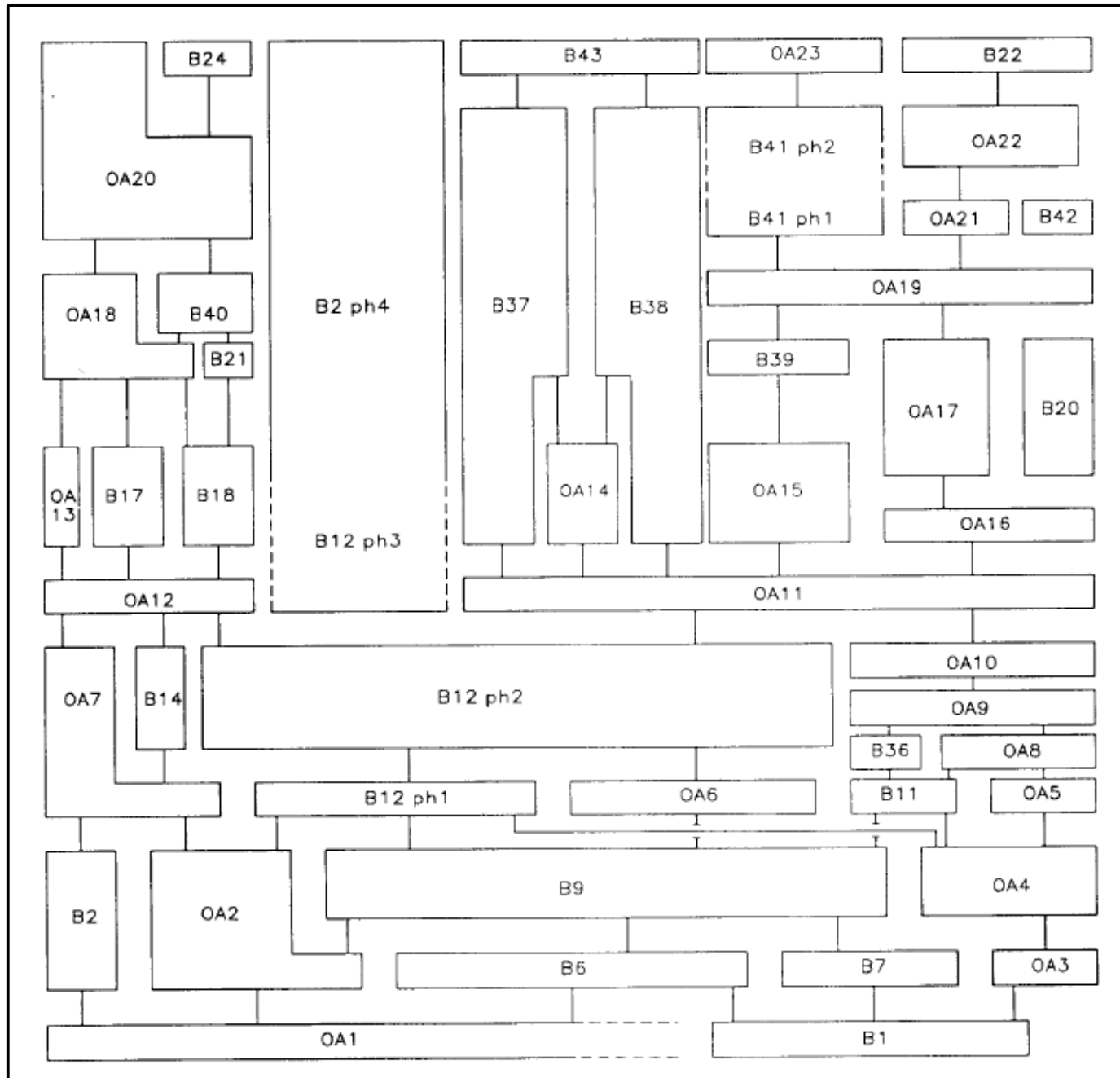




**Map 3**  
East Truckee to Troy

**Legend**

- Airmail Arrow
- Hydroelectric Site
- Industrial Site
- Railroad Site
- Recreational Site
- Road Site
- Settlement Site



## Land-use Diagram

Museum of London Archaeological Service

East of Walbrook Project

36 excavations headed by Tim Williams

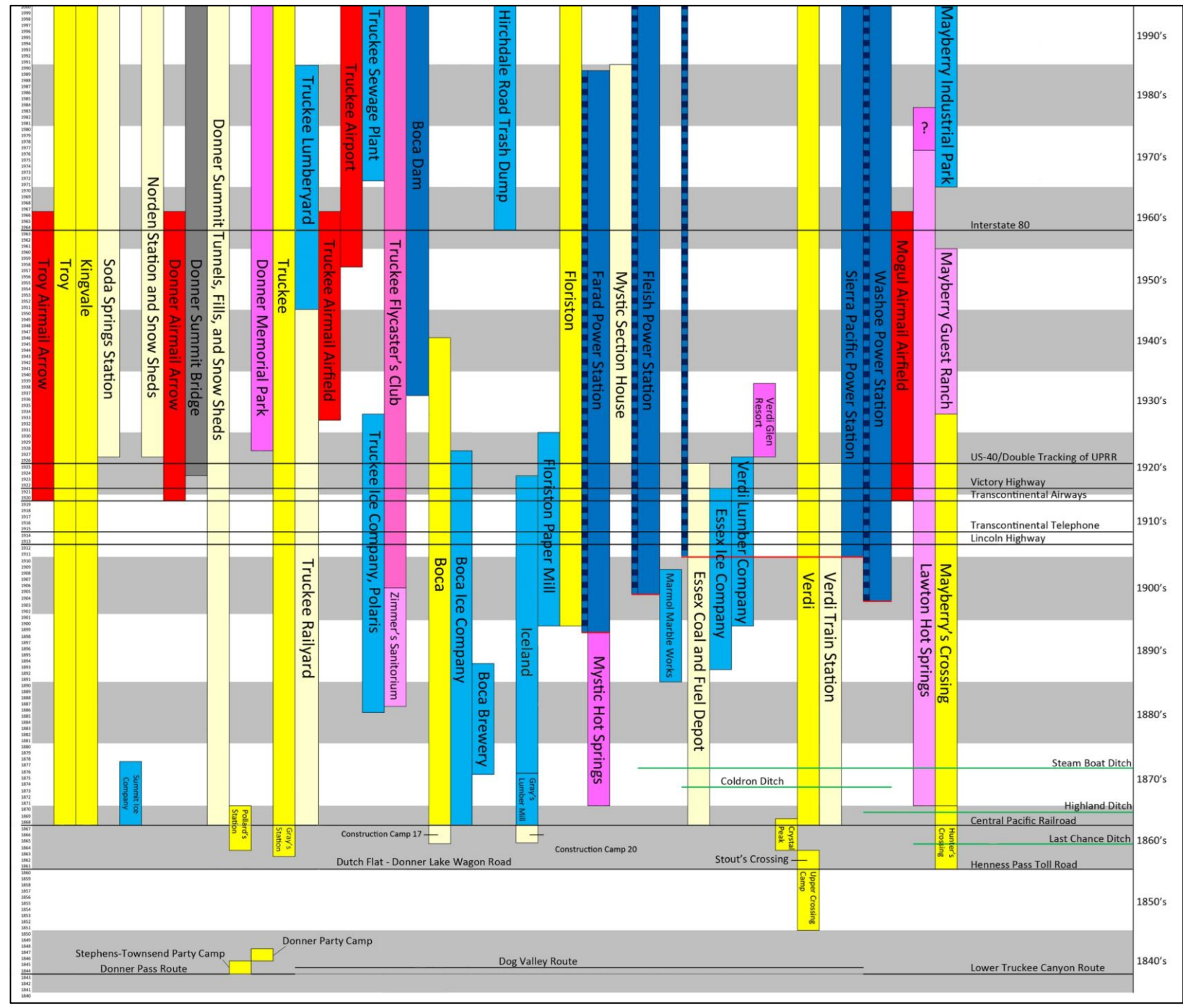
BWE82	1	2	3	Plan
Date				
19-20			12 Pit truncation	7
E17-L17			11 Dump truncation	-
E/M14-15	truncation 10 Dumps	truncation 9.1+ Dumps	truncation 9.2+ Dump	-
M13-E14	8.1+ River deposits + channel			-
M12-ML13		8.2 Dumps		6
10-L11	7 Wattles		6.2+ Dumps and pits	5
10-L11	6.1 Wattles + channel etc			4
10-L11	5.2 River debris + wattles	5.1 Revetment	5.3 Dumps + channel + pit	3
ML4	4.3 Silting	4.1 Wattles	4.2 Revetment + dumps	2
ML3	3 Stakes + peat			-
M3	1+ River silts and peats		2 Revetment	1
L2-EM3				-

Land-use Diagram

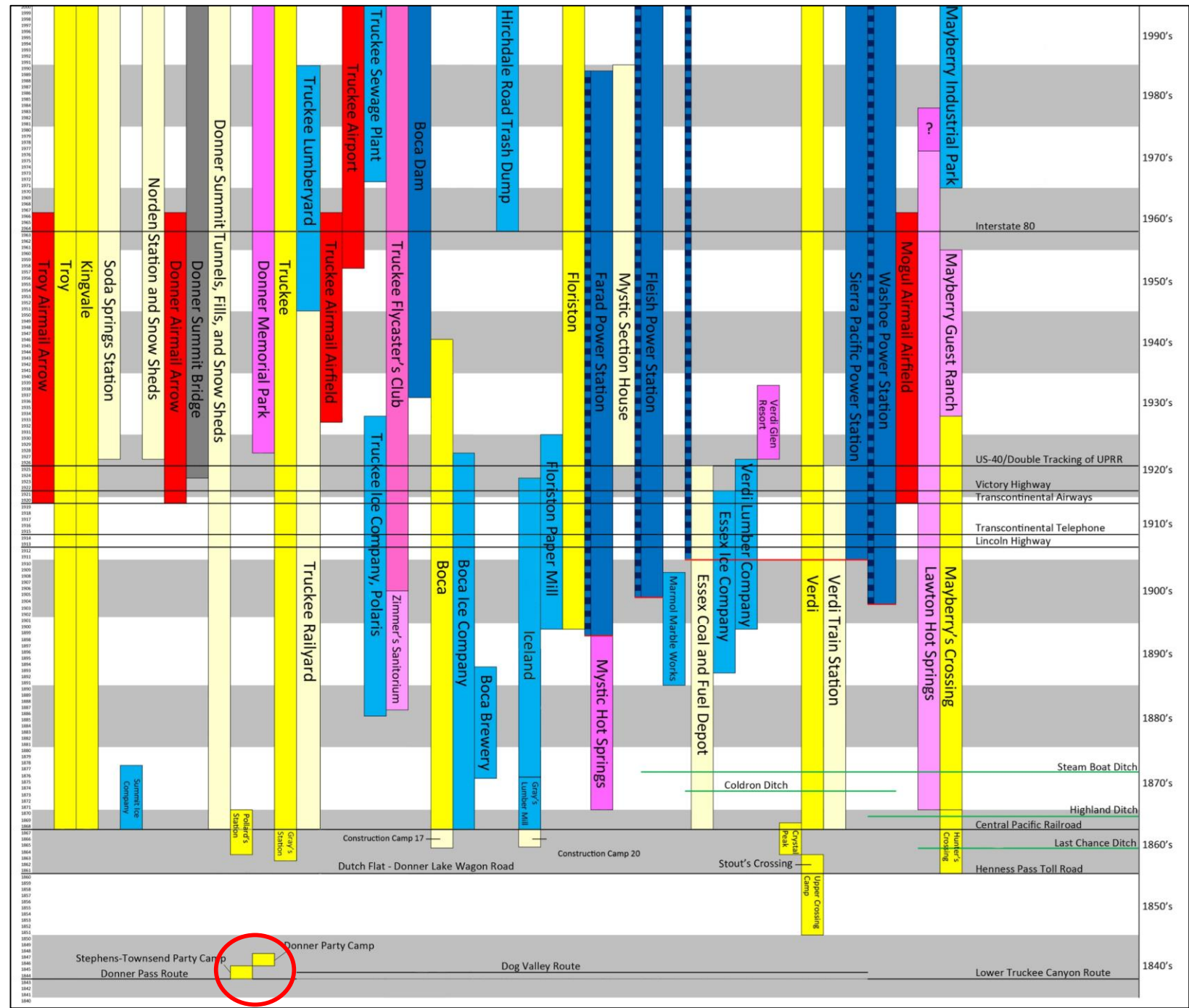
Museum of London Archaeological Service

East of Walbrook Project

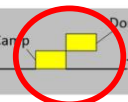
36 excavations headed by Tim Williams

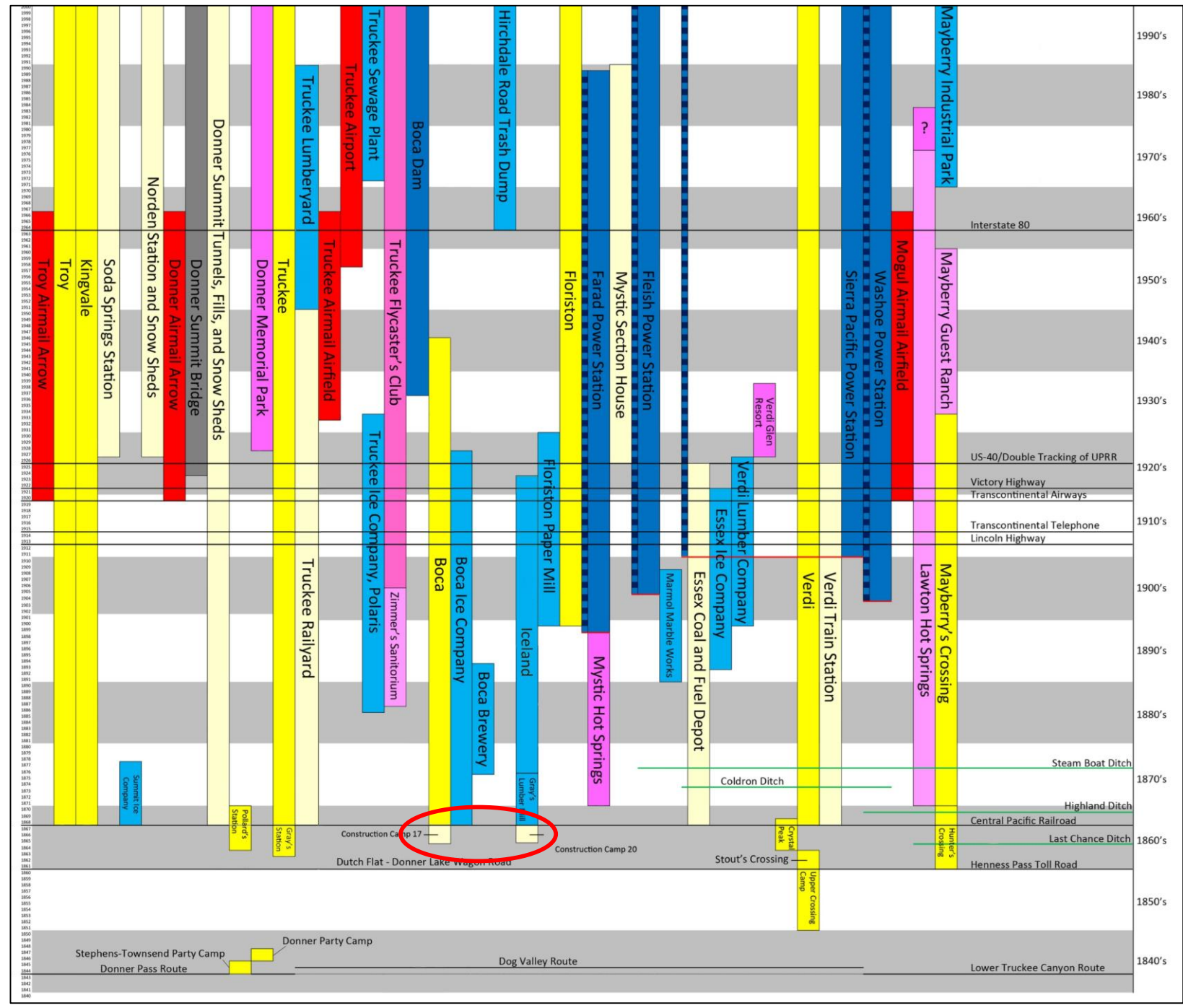


	Air Route
	Settlements
	Railroad
	Industrial
	Highway
	Recreational
	Water Power



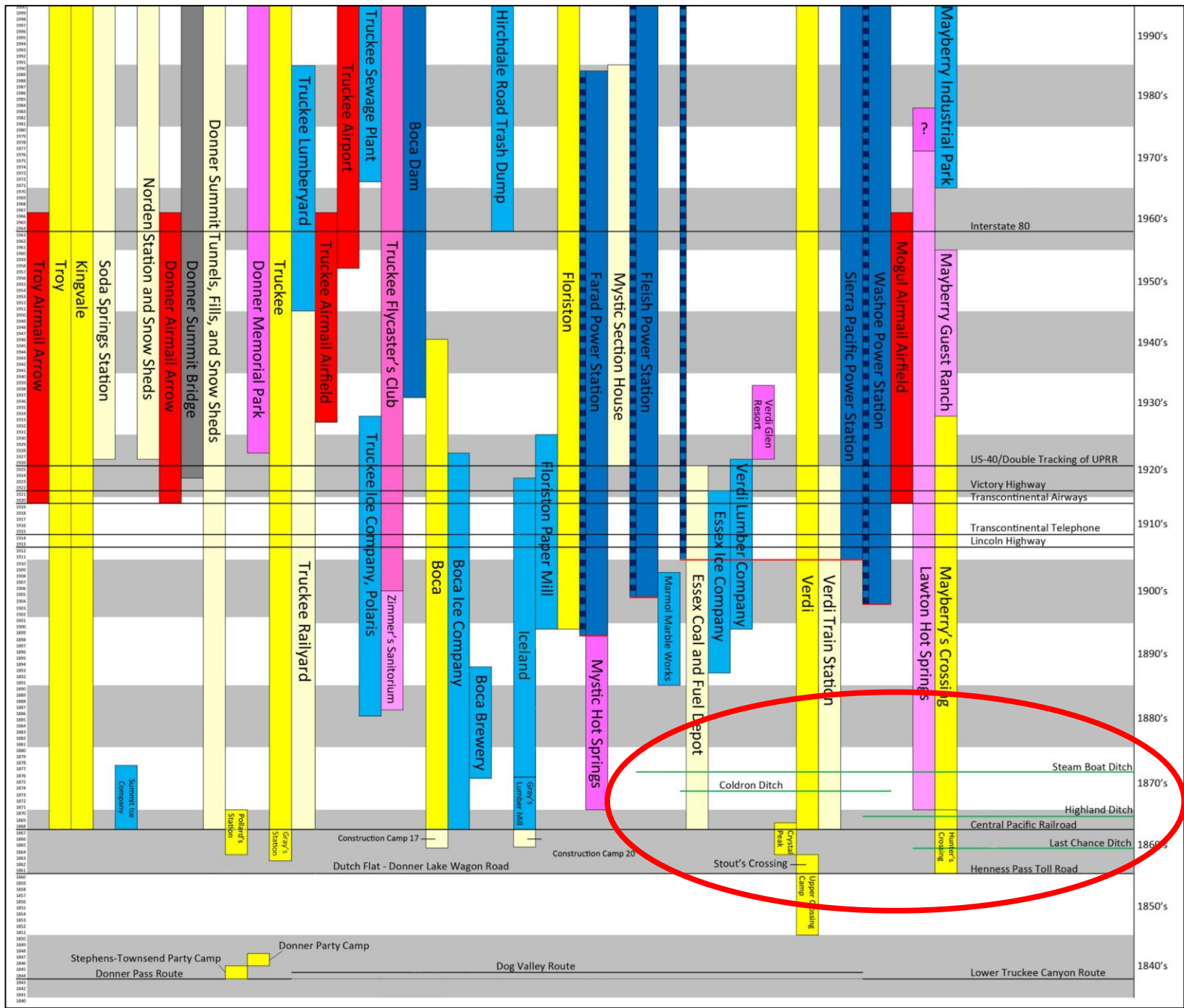
	Air Route
	Settlements
	Railroad
	Industrial
	Highway
	Recreational
	Water Power



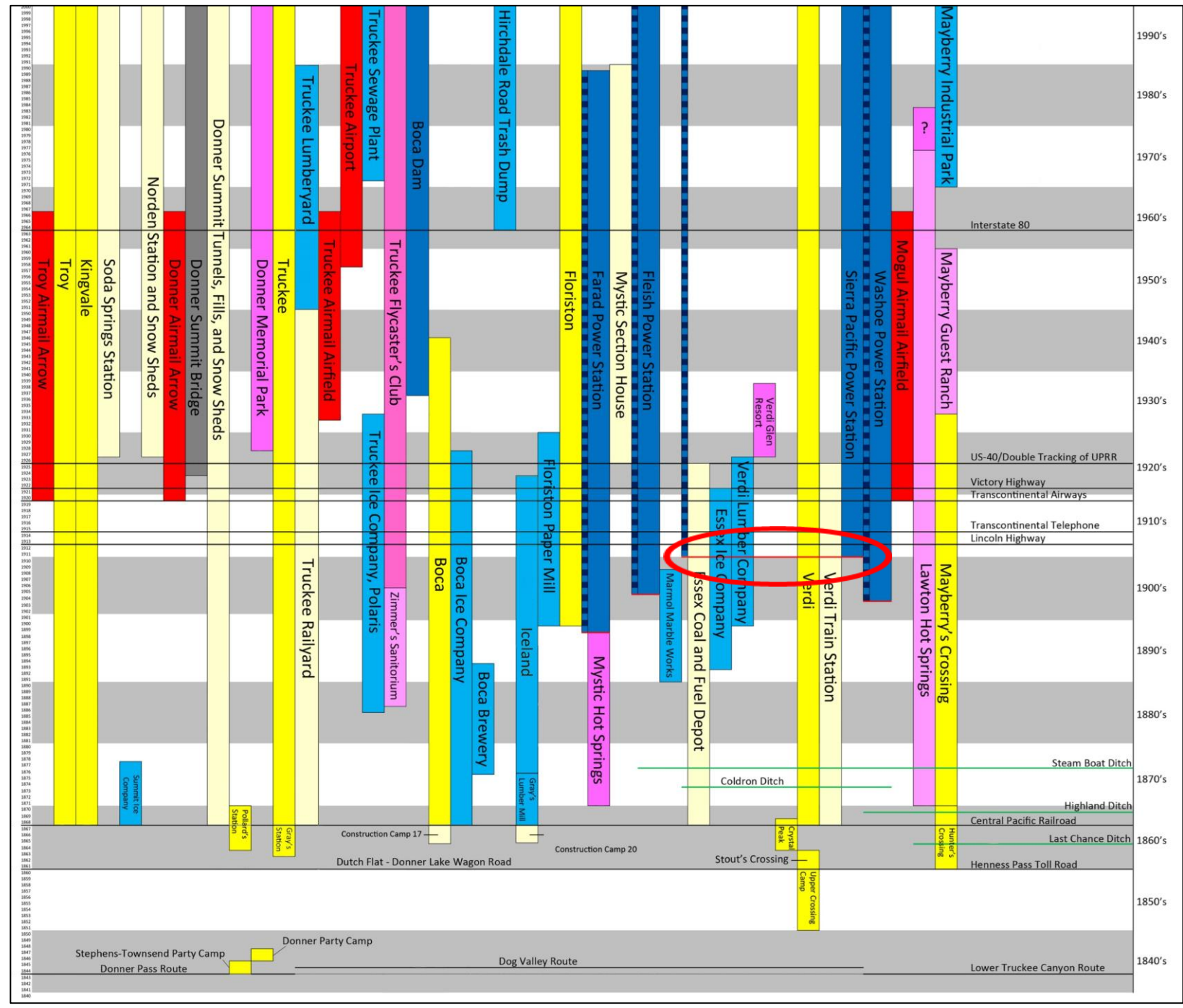


	Air Route
	Settlements
	Railroad
	Industrial
	Highway
	Recreational
	Water Power

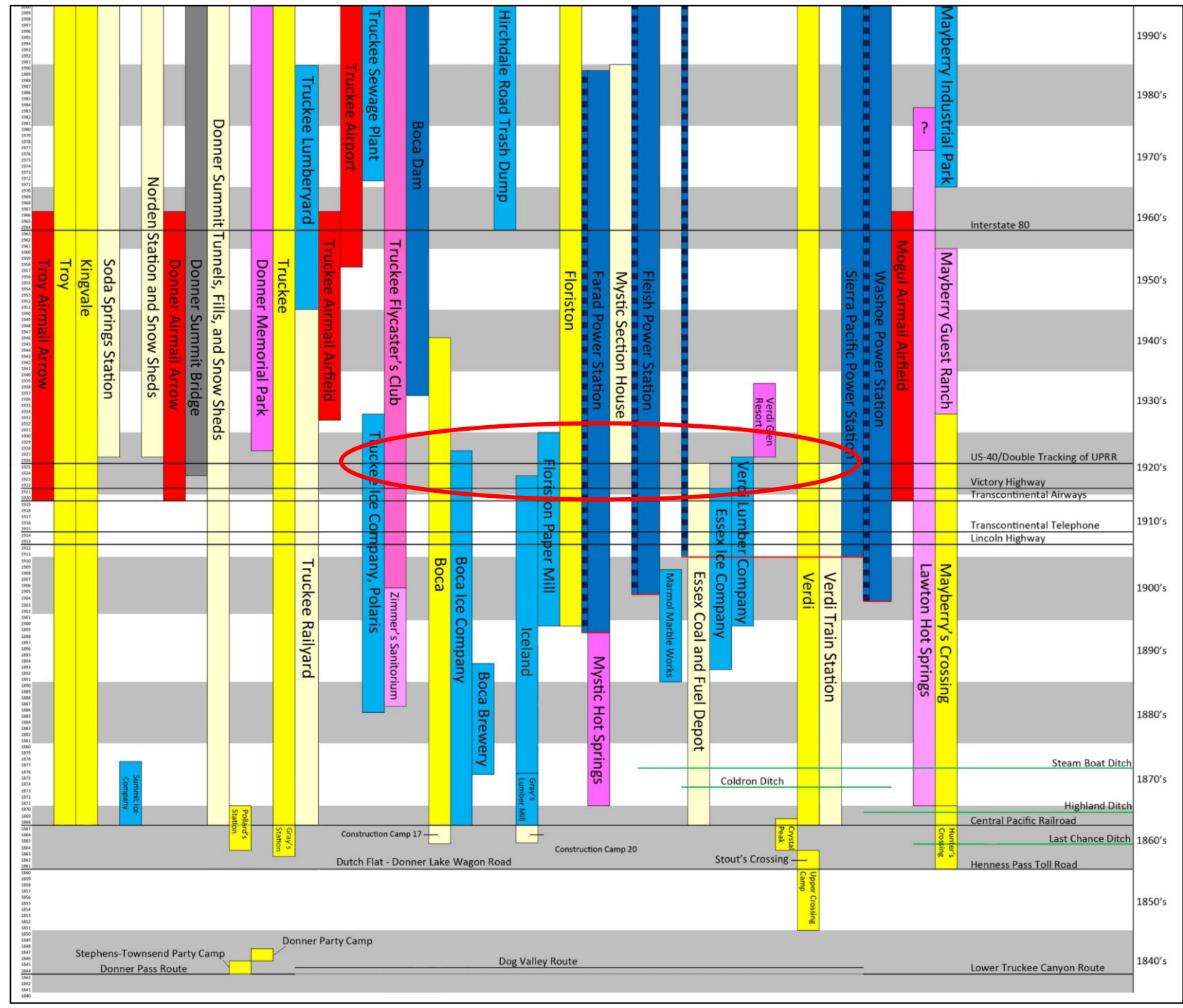




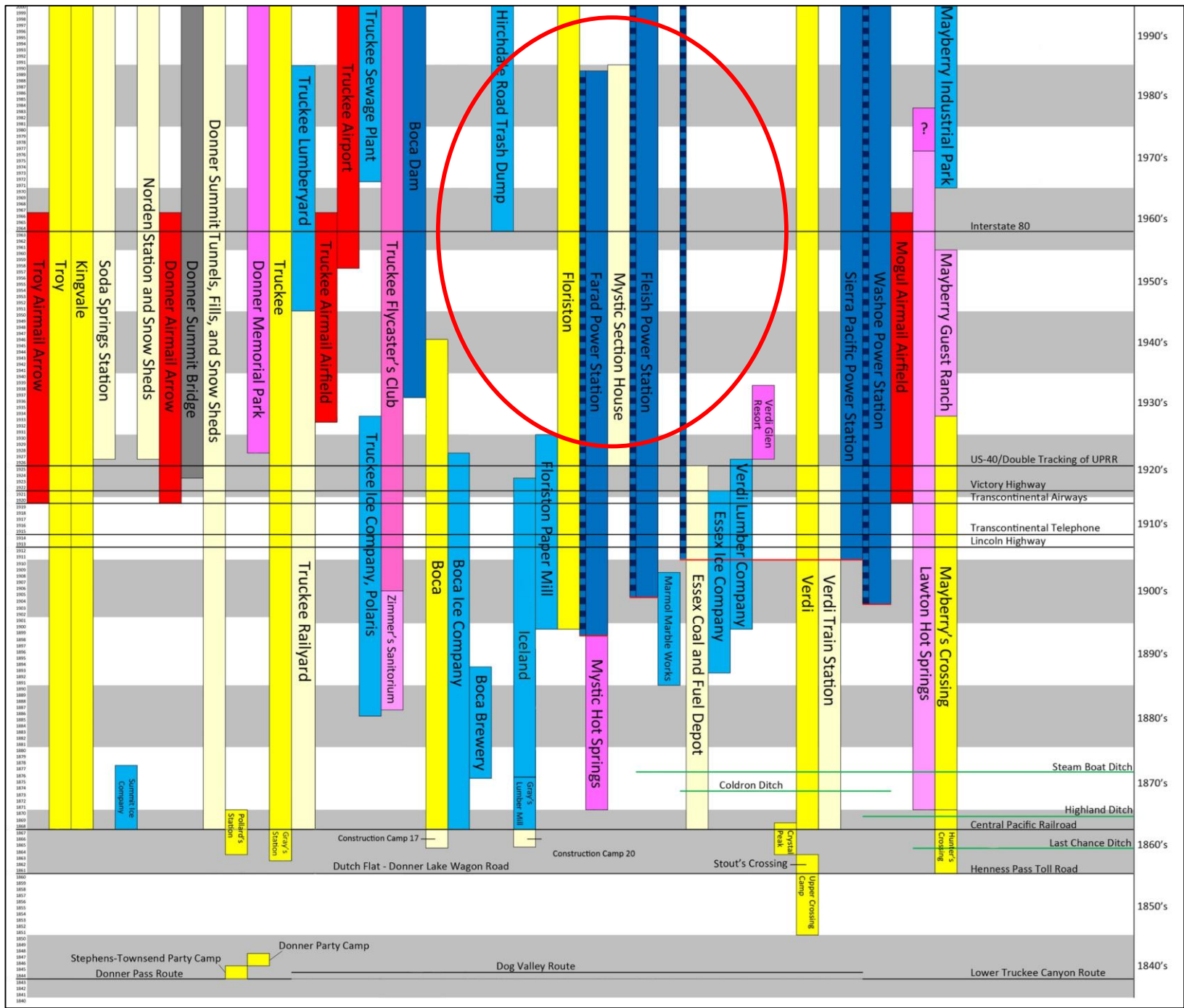
	Air Route
	Settlements
	Railroad
	Industrial
	Highway
	Recreational
	Water Power



	Air Route
	Settlements
	Railroad
	Industrial
	Highway
	Recreational
	Water Power



	Air Route
	Settlements
	Railroad
	Industrial
	Highway
	Recreational
	Water Power



	Air Route
	Settlements
	Railroad
	Industrial
	Highway
	Recreational
	Water Power

1840's: Stephens-Townsend Party Camp, Donner Party Camp, Dog Valley Route, Lower Truckee Canyon Route

1850's: Upper Crossing, Stout's Crossing, Dutch Flat - Donner Lake Wagon Road, Construction Camp 17, Construction Camp 20

1860's: Henness Pass Toll Road, Hunter's Crossing, Central Pacific Railroad, Last Chance Ditch, Highland Ditch, Steam Boat Ditch

1870's: Coldron Ditch, Gerry's Lumber Mill, Iceland, Mystic Hot Springs

1880's: Essex Coal and Fuel Depot, Essex Ice Company, Verdi Lumber Company, Verdi Train Station, Mayberry's Crossing, Lawton Hot Springs

1890's: Marmal Marble Works, Marcell's Sanatorium, Zimmer's Sanatorium, Boca Ice Company, Boca Brewery, Truckee Railway

1900's: Donner Summit Bridge, Donner Summit Tunnels, Fills, and Snow Sheds, Donner Airmail Arrow, Norden Station and Snow Sheds, Soda Springs Station, Kingvale, Troy Airmail Arrow, Troy

1910's: Lincoln Highway, Transcontinental Telephone, Transcontinental Airways, Victory Highway

1920's: US-40/Double Tracking of UPRR, Verdri Glen Resort

1930's: Mayberry Guest Ranch, Mogul Airmail Airfield, Washoe Power Station, Sierra Pacific Power Station

1940's: Floriston, Farad Power Station, Mystic Section House, Fleish Power Station

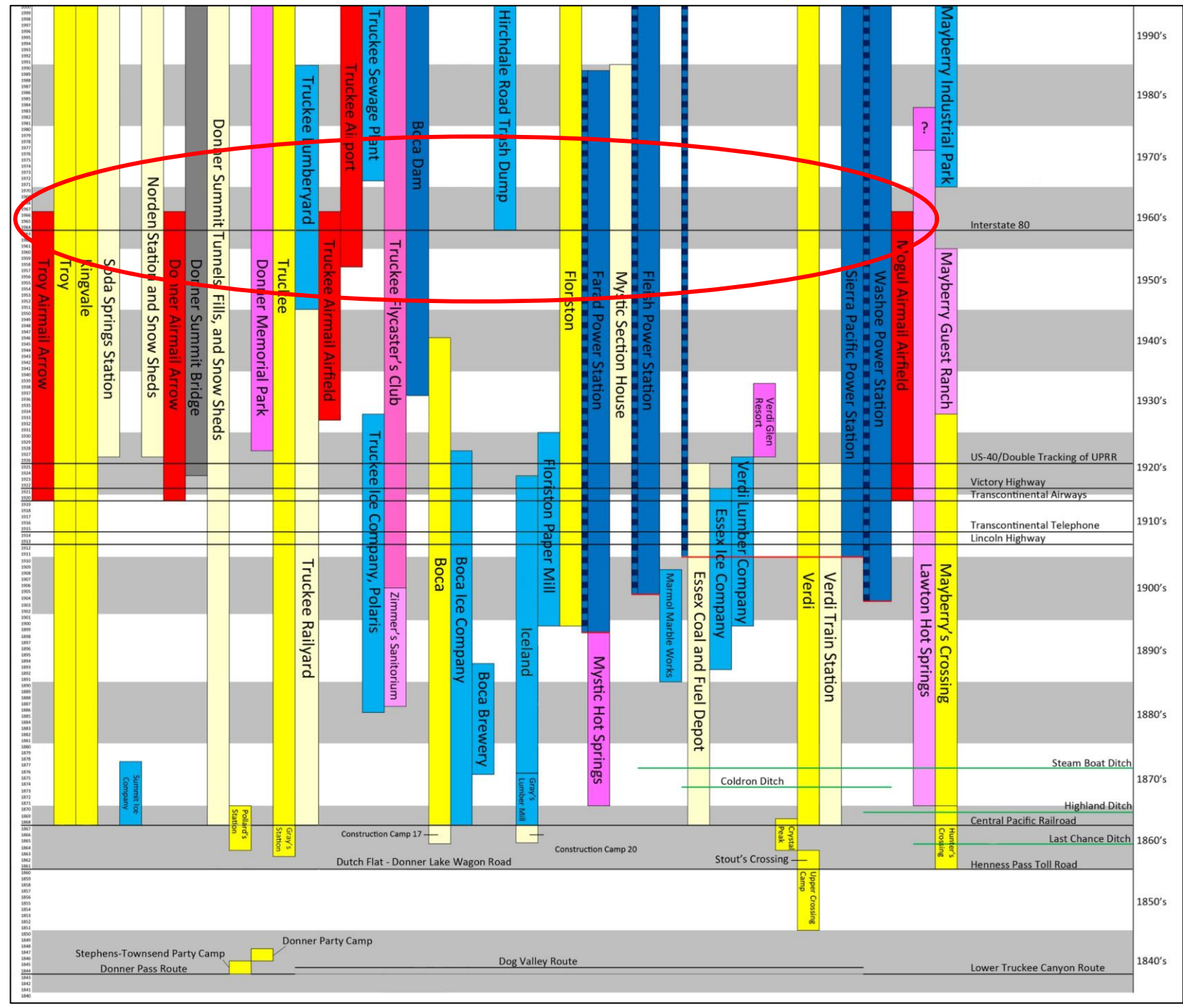
1950's: Truckee Airmail Airfield, Truckee Flycaster's Club, Truckee Ice Company, Polaris, Truckee Lumberyard, Truckee

1960's: Interstate 80, Mayberry Industrial Park

1970's: Truckee Sewage Plant, Truckee Airport, Boca Dam, Hirschdale Road Trash Dump

1980's: Truckee Airmail Airfield, Truckee Airmail Airfield

1990's: Truckee Airmail Airfield

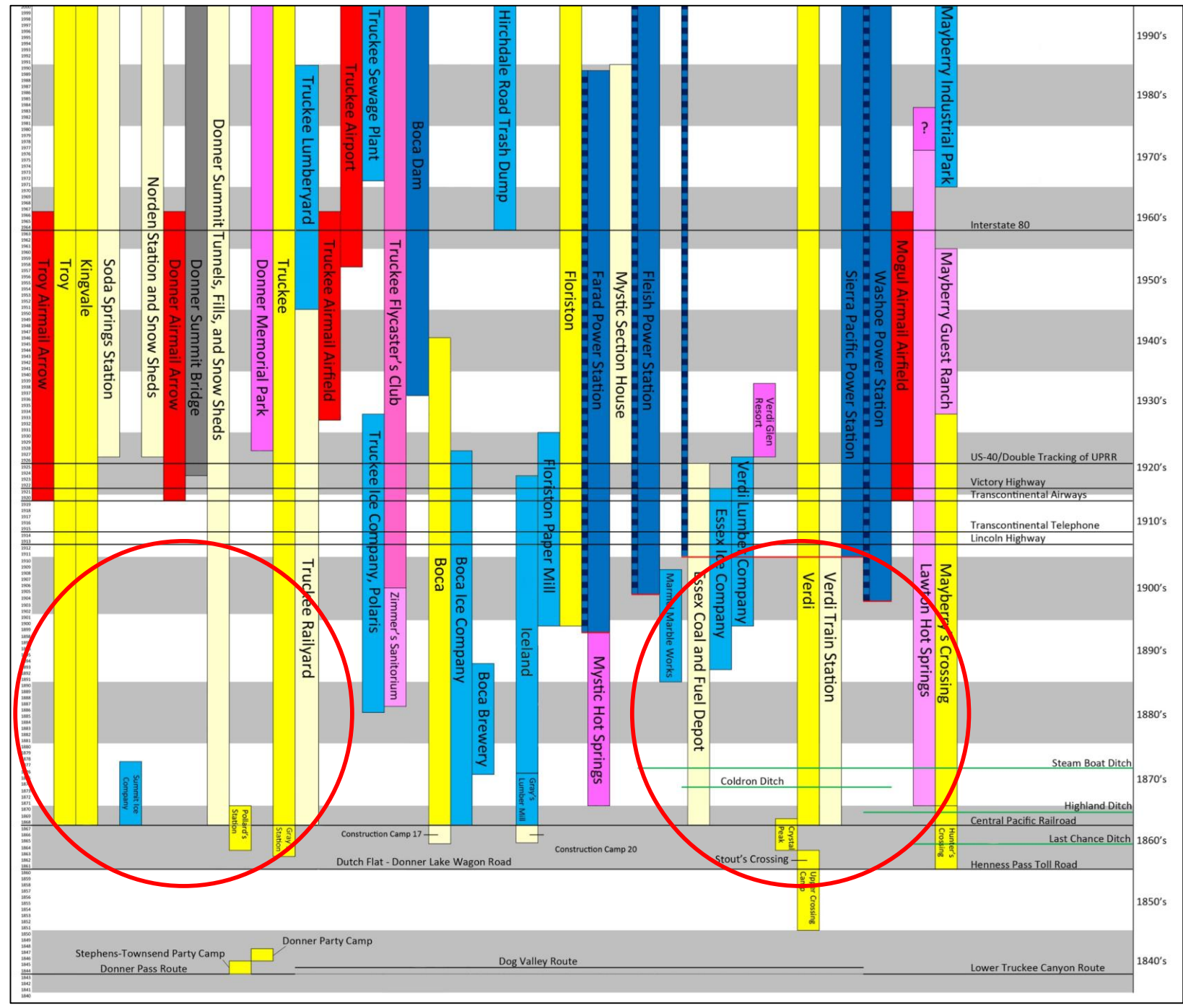


	Air Route
	Settlements
	Railroad
	Industrial
	Highway
	Recreational
	Water Power

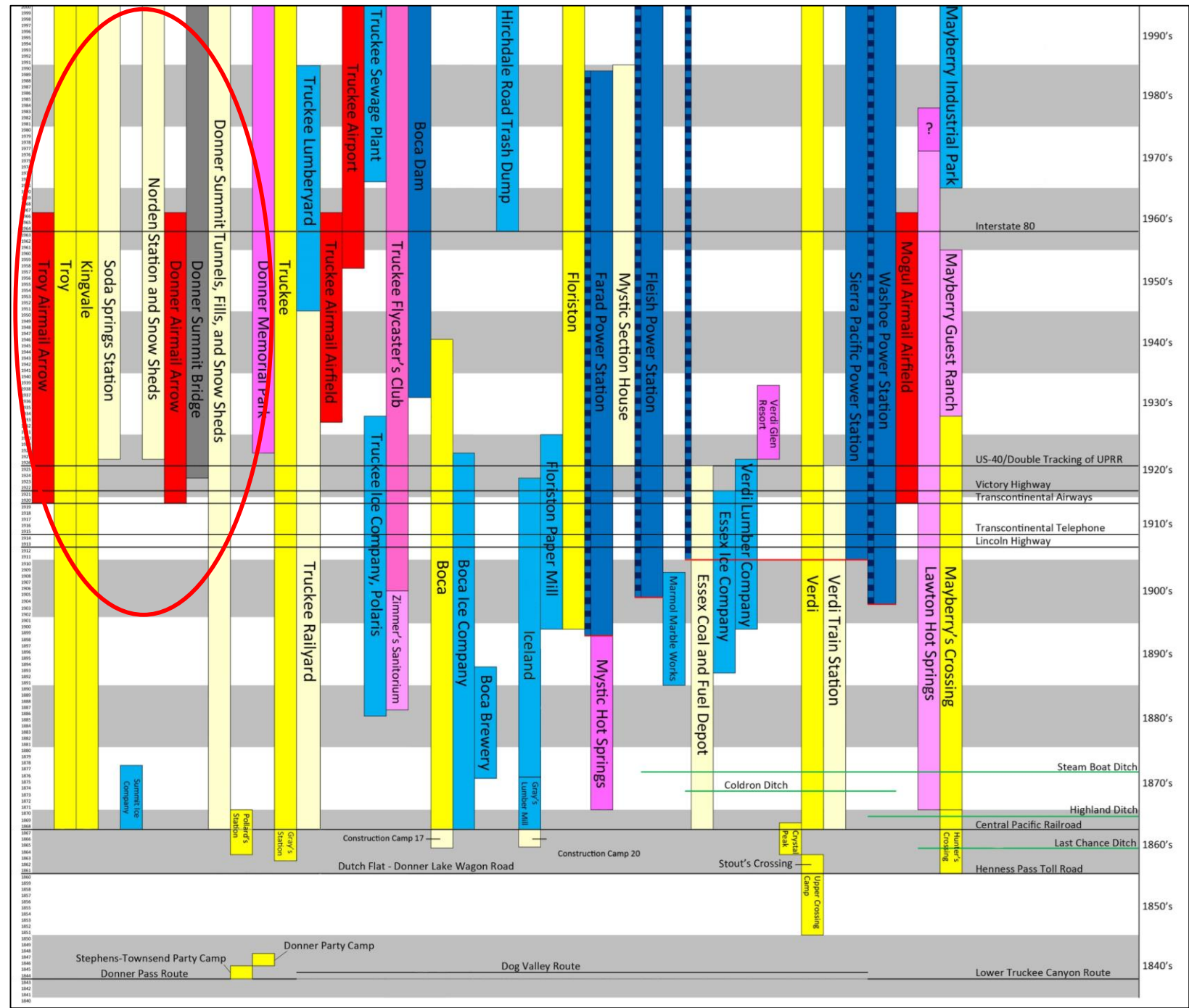
1999  
1998  
1997  
1996  
1995  
1994  
1993  
1992  
1991  
1990  
1989  
1988  
1987  
1986  
1985  
1984  
1983  
1982  
1981  
1980  
1979  
1978  
1977  
1976  
1975  
1974  
1973  
1972  
1971  
1970  
1969  
1968  
1967  
1966  
1965  
1964  
1963  
1962  
1961  
1960  
1959  
1958  
1957  
1956  
1955  
1954  
1953  
1952  
1951  
1950  
1949  
1948  
1947  
1946  
1945  
1944  
1943  
1942  
1941  
1940  
1939  
1938  
1937  
1936  
1935  
1934  
1933  
1932  
1931  
1930  
1929  
1928  
1927  
1926  
1925  
1924  
1923  
1922  
1921  
1920  
1919  
1918  
1917  
1916  
1915  
1914  
1913  
1912  
1911  
1910  
1909  
1908  
1907  
1906  
1905  
1904  
1903  
1902  
1901  
1900  
1899  
1898  
1897  
1896  
1895  
1894  
1893  
1892  
1891  
1890  
1889  
1888  
1887  
1886  
1885  
1884  
1883  
1882  
1881  
1880  
1879  
1878  
1877  
1876  
1875  
1874  
1873  
1872  
1871  
1870  
1869  
1868  
1867  
1866  
1865  
1864  
1863  
1862  
1861  
1860  
1859  
1858  
1857  
1856  
1855  
1854  
1853  
1852  
1851  
1850  
1849  
1848  
1847  
1846  
1845  
1844  
1843  
1842  
1841  
1840

1990's  
1980's  
1970's  
1960's  
1950's  
1940's  
1930's  
1920's  
1910's  
1900's  
1890's  
1880's  
1870's  
1860's  
1850's  
1840's

Stephens-Townsend Party Camp  
Donner Party Camp  
Dog Valley Route  
Lower Truckee Canyon Route  
Donner Pass Route  
Troy  
Spda Springs Station  
Norden Station and Snow Sheds  
Donner Summit Bridge  
Donner Summit Tunnels, Fills, and Snow Sheds  
Truckee  
Donner Memorial Park  
Truckee Lumberyard  
Truckee Sewage Plant  
Truckee Airport  
Boca Dam  
Boca Ice Company  
Boca Brewery  
Hirschdale Road Trash Dump  
Floriston  
Mystic Section House  
Fleish Power Station  
Mystic Section House  
Verdi  
Verdi Train Station  
Verdi Lumber Company  
Essex Ice Company  
Essex Coal and Fuel Depot  
Marshall Marble Works  
Verdi Glen Resort  
Washoe Power Station  
Sierra Pacific Power Station  
Nevada Airmail Airfield  
Mayberry Industrial Park  
Mayberry Guest Ranch  
Mayberry's Crossing  
Lawton Hot Springs  
Hunter's Crossing  
Upper Crossing  
Crystal Peak  
Stout's Crossing  
Construction Camp 17  
Dutch Flat - Donner Lake Wagon Road  
Polander's Station  
Gay's Station  
Truckee Railway  
Truckee Ice Company, Polaris  
Zimmer's Sanitorium  
Boca  
Iceland  
Iceland Lumber Mill  
Gay's Lumber Mill  
Coldron Ditch  
Steam Boat Ditch  
Highland Ditch  
Central Pacific Railroad  
Last Chance Ditch  
Heness Pass Toll Road  
Interstate 80  
US-40/Double Tracking of UPRR  
Victory Highway  
Transcontinental Airways  
Transcontinental Telephone  
Lincoln Highway




	Air Route
	Settlements
	Railroad
	Industrial
	Highway
	Recreational
	Water Power



	Air Route
	Settlements
	Railroad
	Industrial
	Highway
	Recreational
	Water Power

## Acknowledgements

Matt Herrick & Margo Memmott at  who supported this trip and offered advice about the project

Chiz Harward at Urban Archaeology, Gloucestershire, who provided information and advice regarding the Land-use Diagrams